

Metropolitan Sydney

Climate Change Snapshot

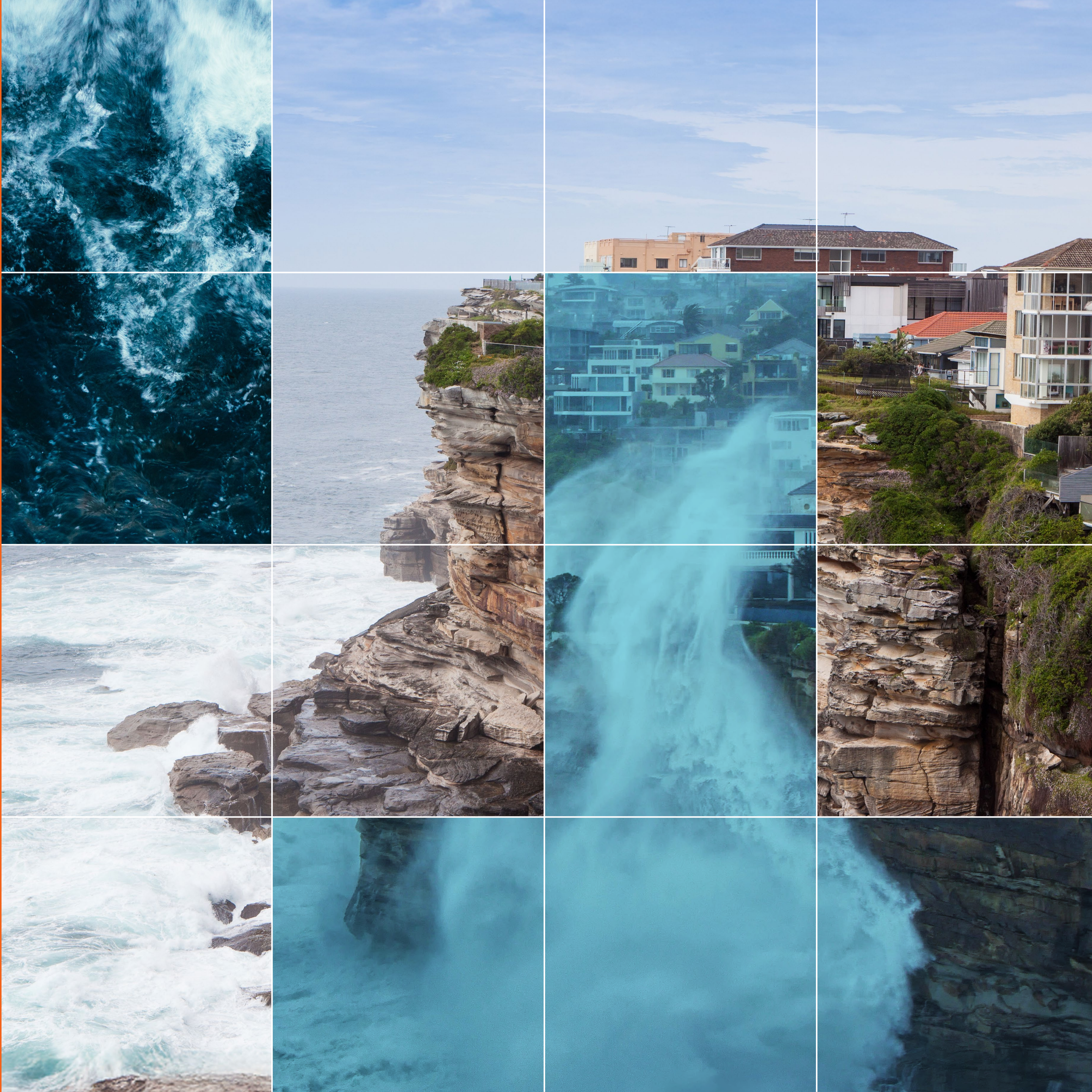
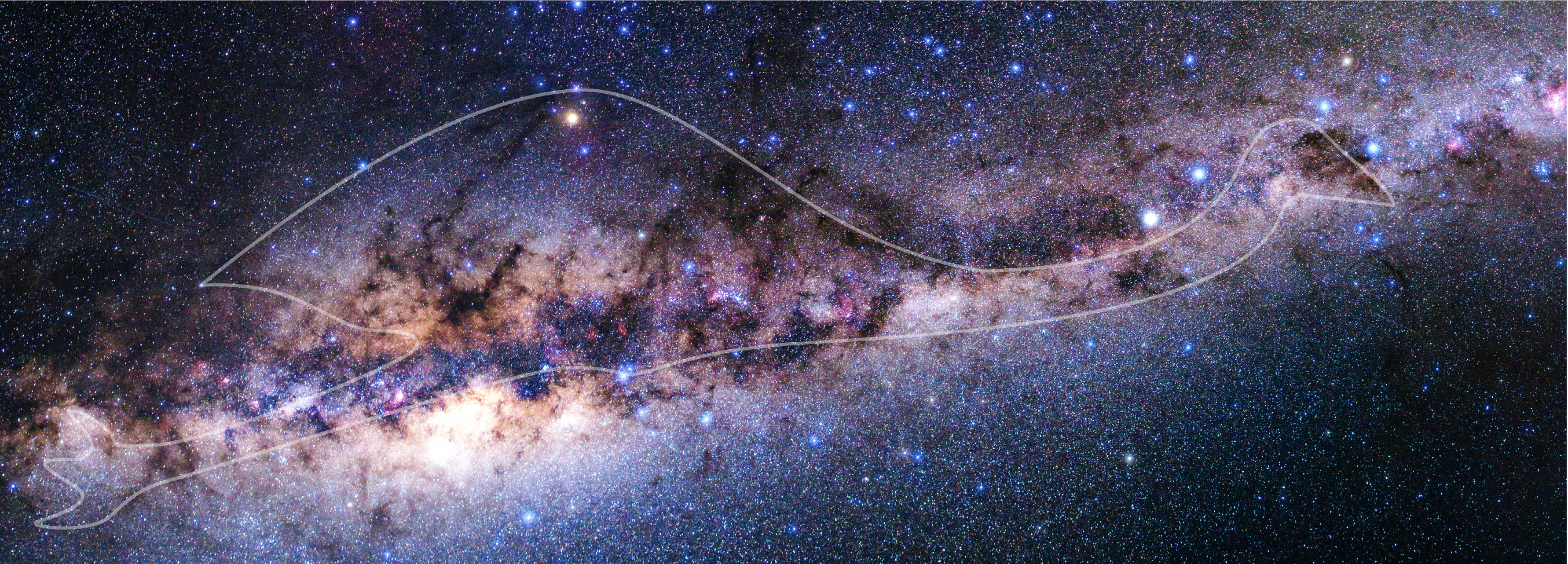


Photo caption:

The Emu in the Sky is an Aboriginal constellation that is made up of the dark clouds of the Milky Way. With the movement of the Earth, the position of the Emu in the Sky changes throughout the year. Aboriginal people in some nations across NSW and Australia relate the position of the Emu in the Sky to the breeding behaviour of the emu on the land. Cultural astronomy teaches us about the relationship between the sky and land; and that we are all interconnected.



Published by:

Department of Climate Change,
Energy, the Environment and Water
Locked Bag 5022, Parramatta
NSW 2124

T +61 2 9995 5000 (switchboard)
T 1300 361 967 (Environment and
Heritage enquiries)

TTY users: phone 133 677
then ask for 1300 361 967

Speak and listen users: phone
1300 555 727 then ask for
1300 361 967

E info@environment.nsw.gov.au

W www.environment.nsw.gov.au

ISBN 978-1-923516-84-7
Published: November 2025

Acknowledgement of Country

The NSW Government acknowledges First Nations people as the first Australian people and the traditional owners and custodians of the country’s lands and water. Australia’s First Nations people have lived in NSW for over 60,000 years and have significant spiritual, cultural and economic connections with its lands, waters, seas and skies.

The Metropolitan Sydney region encompasses the traditional lands of the Dharawal, Dharug, Darginung, Guringai and Gundungurra peoples.

They are the first astronomers and scientists who have been listening, reading and understanding natural processes and caring for Country for generations.

We pay respects to Elders past and present and acknowledge the significance of their traditional knowledge in adapting to changes in climate over tens of thousands of years.

We recognise the importance of their cultural knowledge and guidance at this pivotal moment in time.



About this snapshot

The New South Wales (NSW) and Australian Regional Climate Modelling (NARClIM) project delivers high-resolution climate change projections for NSW and south-east Australia.

This snapshot provides the latest NARClIM2.0 climate projections for Metropolitan Sydney under low, medium and high emissions scenarios for the middle of the century (2050) and end of the century (2090). It includes projections for key climate variables including temperature, average rainfall, hot days (days $\geq 35^{\circ}\text{C}$), cold nights ($< 2^{\circ}\text{C}$), and severe fire weather days (Forest Fire Danger Index > 50). The projections help illustrate potential climate changes and their impacts, as well as associated climate risks.

NSW is already experiencing climate change. This document provides local-scale climate modelling insights to help Metropolitan Sydney communities understand and plan for the impacts of climate change on their infrastructure, environment and way of life; and to support informed planning, risk assessment and action.

This snapshot offers a high-level overview, with more detailed data available through the [AdaptNSW Interactive Map](#), [Climate Data Portal](#) and [AdaptNSW](#).

How to use this snapshot

While there are several different ways to engage with the information in this snapshot, here are some key things to consider:

- **Explore each climate variable across scenarios** – review projections under low (SSP1–2.6), medium (SSP2–4.5), and high (SSP3–7.0) emissions scenarios to understand how climate risk differs depending on emissions pathways (Shared Socioeconomic Pathways, SSPs).
- **Compare scenario-based changes over time** – examine how each climate variable responds to different emissions scenarios for the middle of the century (2050) and the end of the century (2090) to understand how risks may evolve.
- **Identify where projections of climate variables align or diverge** – look for patterns across emissions scenarios and timeframes to see where risks remain consistent and where they escalate or diverge significantly.

Time periods in this snapshot

The projections for each time period represent averaged data across all climate models used for NARClIM for a 20-year period:

- **Baseline period: baseline** → The modelled average for each climate variable from 1990–2009, used for comparison with future projections.
- **Middle of the century: ‘2050’ projection** → The projected average for each climate variable for 2040–2059.
- **End of the century: ‘2090’ projection** → The projected average for each climate variable for 2080–2099.



About this snapshot

NARClIM climate projections

NARClIM is NSW's regional climate modelling project. NARClIM combines carefully selected global and regional climate models through a process known as dynamical downscaling, to generate detailed, locally relevant climate projections. These simulate a range of plausible future climates, helping to inform climate risk assessments and support planning at local and regional levels.

Launched in 2024, NARClIM2.0 provides nation-leading climate model data that span the range of plausible future changes in climate. It offers:

- climate projections out to the year 2100, and simulations of the past climate from 1951 to 2014
- 4-km scale projections for south-east Australia
- 20-km scale projections for the broader Australasian region
- projections for key climate variables and extremes.

There is more information [About NARClIM](#), as well as specific information on [Downscaling in NARClIM](#) and [Global and regional climate models used by NARClIM](#) at AdaptNSW.

Methods and uncertainty

To help address future uncertainty, NARClIM2.0 is built on a selection of emissions scenarios, global climate models and regional climate models that, together, capture a range of climates that could occur. This is referred to as the NARClIM model ensemble. The NARClIM2.0 model ensemble is made up of different combinations of 5 global climate models and 2 regional climate models, giving 10 model combinations in total.

The data presented in this snapshot is generally an average for different 20-year time periods (e.g. the 2050 projection is the average for the 2040–2059 time period). Time series data are presented as annual averages. Combining multiple models through averaging and other statistical methods produces better projections by providing a comprehensive representation of possible future climate scenarios.

To ensure that NARClIM models adequately simulate regional climate, scientists use them to simulate the past climate and compare the results with actual observations. Outputs undergo rigorous quality control and scientific technical peer review.

There is more information on [The NARClIM modelling methodology](#) and [NARClIM data processing, testing and validation](#) at AdaptNSW.

Mental health support

Climate change information can be distressing for some readers, with many Australians of all ages experiencing significant eco-anxiety. For supporting information, please visit the [Black Dog Institute](#) or [Australian Psychological Society](#) or speak with your local healthcare provider.

About this snapshot

Shared Socioeconomic Pathways

NARClIM2.0 uses Shared Socioeconomic Pathways (SSPs), which are the most recent emissions scenarios adopted in [Coupled Model Intercomparison Project Phase 6 \(CMIP6\)](#) models and used in the Intergovernmental Panel on Climate Change (IPCC) Sixth Assessment Report.

The SSPs are a type of storyline-based emission scenario that estimate the world's future emissions and how these will affect the climate. SSPs outline different global development trajectories based on factors such as population, economic growth, education, urbanisation and land use, and technological advancement.¹ By analysing SSPs, we can better understand the long-term consequences of today's decisions and determine if we are heading toward higher-risk scenarios.²

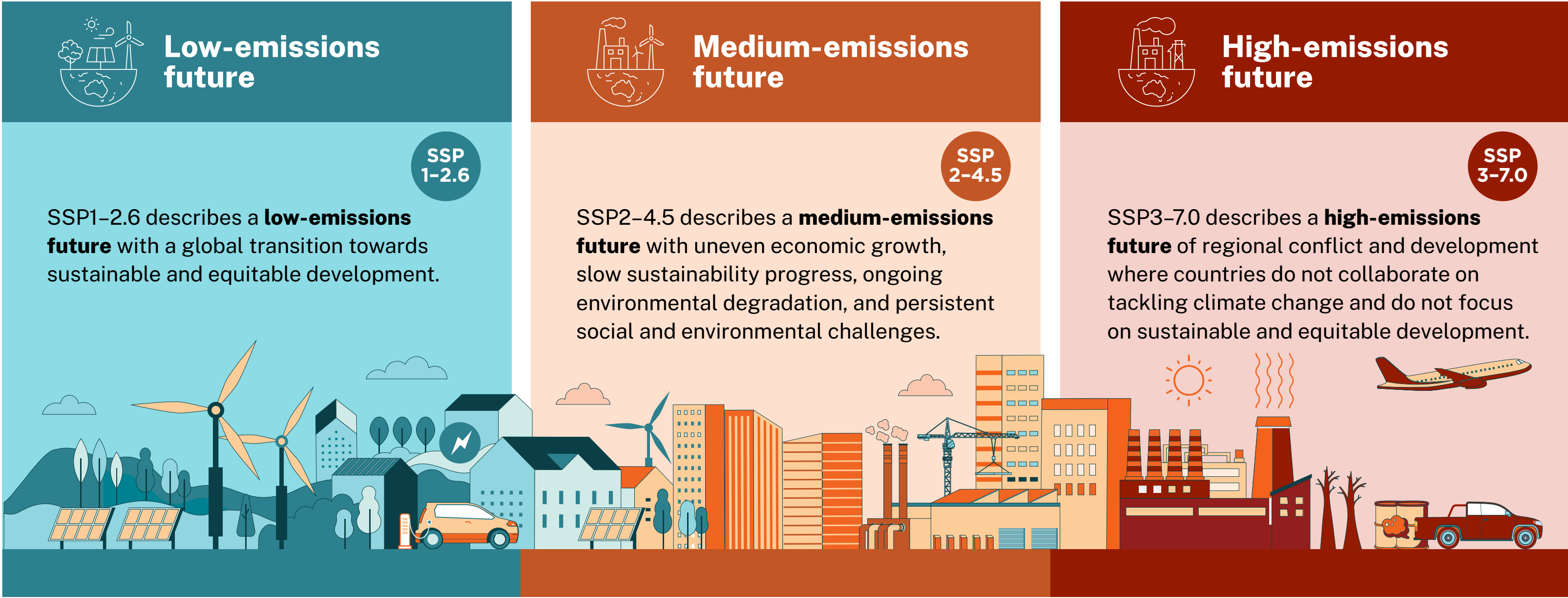
For more information on emissions scenarios visit [Emissions scenarios used by NARClIM](#) on AdaptNSW and [Summary for policymakers report](#) by the IPCC.

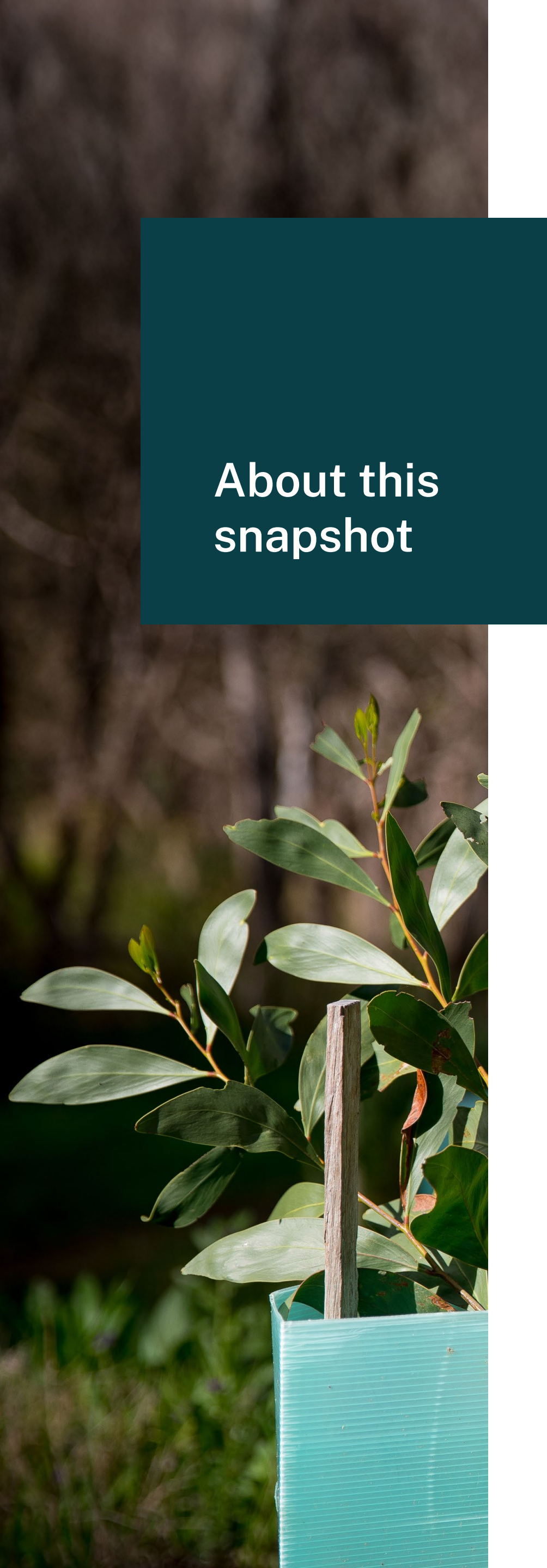
Why do we use 3 SSPs?

The future is uncertain. There are many plausible futures on the horizon, and the one we reach depends on the path we take to get there. NARClIM provides projections for 3 SSPs (low-, medium- and high-emissions), each representing a distinct future with varying levels of climate risk.

Considering a range of SSPs and understanding where these scenarios align or diverge – in both the middle of the century (2050) and the end of the century (2090) – helps inform better planning and decision-making. NARClIM data highlights just how stark the differences between futures can be.

For more information about how to integrate this information into your risk assessments see [Climate risk ready guide](#) and [Limitations and appropriate use](#) on AdaptNSW.





About this snapshot

Understanding the baseline period

To assess future climate projections, a climate baseline is used. This is a reference point which future change is relative to. In this snapshot, the baseline is the 20-year period from 1990 to 2009. This period is termed the baseline period to represent the average climate across those 2 decades.

A 20-year baseline averages out natural climate variability and avoids misleading comparisons with unusually hot, cold, wet or dry years. Using a fixed reference point prevents issues that may arise from using shifting reference points to compare future change against.

Climate during the baseline period is described in 2 ways in this snapshot:

- **Historical model:** The NARClIM2.0 simulation of past climate conditions.
- **Observed:** What was actually measured using weather station data during this period.

These 2 values are similar but not the same. Climate models aim to capture long-term patterns and trends, rather than matching observations perfectly. Observed values give context for comparison of the historical model with what it was in reality.

Looking backwards from the baseline

Before the baseline period, +0.84°C of observed warming had already occurred across NSW and the Australian Capital Territory (ACT) since records began. This is the difference between the 20-year average temperature of the 2 periods centred on 1920 (1910–1929) and 2000 (1990–2009). The Bureau of Meteorology’s national climate records for temperature begin in 1910, making 1910–1929 the first available 20-year average for comparison with the baseline.

Consider the following when incorporating past warming into future projections:

- Warming before the baseline (+0.84°C) is not included in projections of future change.
- Warming after the baseline period is already included in future projections and should not be added again.

Looking forwards from the baseline

Use the historical model values in Table 1 as the baseline when interpreting both middle of the century and end of the century climate projections in this snapshot.

By comparing future projections to the historical model baseline values, we ensure the projected changes reflect genuine shifts, instead of also including the small differences between the modelled and observed data.

Table 1. Baseline climate for Metropolitan Sydney

	Average temperature	Average maximum temperature	Average minimum temperature	Hot days	Cold nights	Rainfall	Severe fire weather days
Observed	16.5°C	22.5°C	10.6°C	8.1 days	20.8 days	879 mm	1.3 days
Historical model	16.1°C	22.2°C	11.4°C	8.2 days	19.2 days	916 mm	1.7 days

Table 1 outlines the annual average values for the baseline period in this snapshot. All observed data is calculated from Bureau of Meteorology products. Long-term temperature change data is from the long-term temperature record.³ Observed information and data in graphs come from Australian Gridded Climate Data (AGCD).⁴



Climate of Metropolitan Sydney

The climate of Metropolitan Sydney underpins a diverse array of important lifestyles, industries and natural ecosystems. A stable climate is critical to support a range of values in Metropolitan Sydney, including our unique biodiversity, recreational activities and food systems.

The Metropolitan Sydney region encompasses the traditional lands of the Dharawal, Dharug, Darginung, Guringai and Gundungurra peoples.

The Metropolitan Sydney region is home to approximately 5 million people and is Australia's largest city, covering an area of nearly 12,000 km². The Metropolitan Sydney region includes major cities, towns and regions, such as Campbelltown and Sutherland to the south, the Blue Mountains and Penrith to the west, and Hawkesbury, Hornsby and the Northern Beaches to the north.

The climate of the Metropolitan Sydney region is generally warm and temperate, but the complex topography of the region and its coastal setting result in a variety of climates across the region. It is relatively wet along the coast and in the Blue Mountains. During summer, it is warmer in Western Sydney than near the coast and in the Blue Mountains, which are cooler. Temperatures are milder along the coast, with cooler summers and warmer winters compared to much of the rest of the region. Rainfall patterns in the region are also marked by variability, with the coastal areas generally receiving more rainfall than inland areas. The variation in climate and topography across the region gives rise to a diverse range of natural ecosystems, from sandstone plateaus covered with dry sclerophyll forest, to the escarpment and sheltered gorges that feature rainforest and tall eucalypt forests, to saline wetlands and sandy beaches along the coast. Significant environmental values include the 8 national parks comprising the Greater Blue Mountains World Heritage Area and the internationally significant Ramsar-listed Towra Point coastal wetland.

Working-aged people (15–64 years) represent 66.9% of the region's population (slightly higher than the NSW and ACT average of 64.3%), while children and adolescents (0–14) represent 18.4%, and people aged 65 and over make up 14.7% of the region's population.⁵

Metropolitan Sydney supports a diverse range of industries that are vital for NSW's economy, with the highest number of businesses in construction, specialised services (professional, scientific and technical), property and rental services as well as logistic services (transport, post and warehousing). The largest industries of employment for the region are health care and social assistance (12.9%), specialised services (11.1%), retail trade (8.6%), education and training (8.4%), construction (7.8%) and financial and insurance services (7.1%).⁵

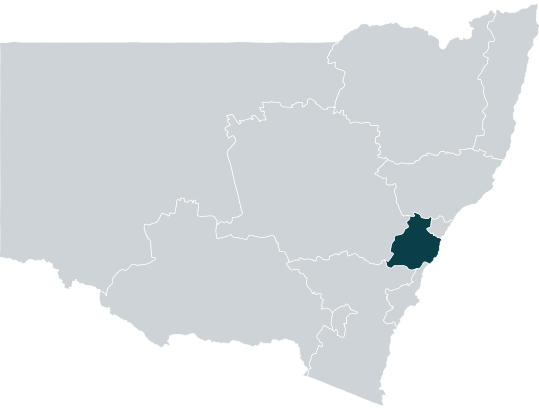
The region's climate has provided the foundation for many of the region's current social, economic and ecological systems. These systems will be impacted by increased temperatures, more hot days, fewer cold nights, greater fire danger, and higher rainfall variability.

The following pages outline the projected changes in these key climate variables across Metropolitan Sydney.





PROJECTED CHANGES



Increase in average temperature

Increase in hot days per year

Decrease in average winter rainfall

Increase in severe fire weather days per year

Low-emissions scenario		Medium-emissions scenario		High-emissions scenario	
2050	2090	2050	2090	2050	2090
+1.0°C +1.2°C		+1.4°C +2.4°C		+1.8°C +3.4°C	
+6.2 +7.3		+7.0 +13.9		+9.7 +20.4	
-17.2% -20.3%		-26.4% -30.0%		-33.0% -35.1%	
+0.7 +0.8		+0.8 +1.7		+1.2 +2.5	

REGIONAL IMPACTS

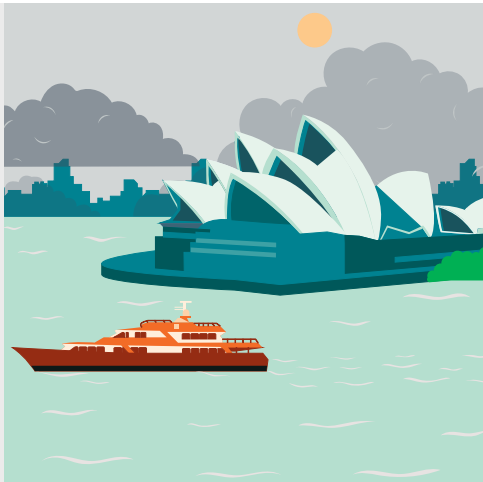


Water supply

Changes to rainfall

Air quality

Increased severe fire weather



Bushland

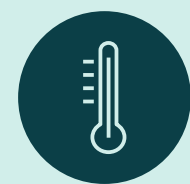
Increased severe fire weather

Urban centre

Increased extreme heat



Data is based on NARcliM2.0 projections for SSP1–2.6 (low-emissions), SSP2–4.5 (medium-emissions) and SSP3–7.0 (high-emissions) and is presented relative to the baseline period of 1990–2009. Values presented are averages across the NARcliM2.0 model ensemble, and do not represent the full range of plausible climate futures. Regional climate change impacts are used to highlight how the region is likely to be affected by climate change, and impacts are not limited to the examples provided.



Temperature

In NSW, 8 of the 10 warmest years on record since 1910 have occurred since 2013.



3.4°C

rise in average temperature across Metropolitan Sydney by 2090 under a high-emissions scenario.

Temperatures are projected to be higher by 2050 under a high-emissions scenario than by 2090 under a low-emissions scenario.

Metropolitan Sydney is getting warmer

Temperature is the most robust indicator of climate change. In NSW, 8 of the 10 warmest years on record since 1910 have occurred since 2013. The warmest year on record for both mean temperature and maximum temperature in the Metropolitan Sydney region was 2019, when the average temperature was 1.1°C above the 1990–2009 baseline average.⁴

Projections

Across the Metropolitan Sydney region, average temperatures will increase throughout this century (Figure 1).

Under a low-emissions scenario, the average temperature increase across the region is projected to be less than 0.2°C between 2050 and 2090. However, major temperature increases of 1.0°C under a medium-emissions scenario and 1.6°C under a high-emissions scenario are projected during the same period. Notably, the temperature projections for 2050 under both a medium-emissions scenario and a high-emissions scenario are expected to exceed the projections for 2090 under a low-emissions scenario (Table 2).

Relatively uniform temperature increases are expected across the region (Figure 2) and across all seasons. By 2090, Penrith is likely to experience an increase in temperature of 1.2°C under a low-emissions scenario, 2.4°C under a medium-emissions scenario and 3.5°C under a high-emissions scenario. Comparatively, Cronulla is likely to experience an increase in temperature of 1.2°C under a low-emissions scenario, 2.3°C under a medium-emissions scenario and 3.4°C under a high-emissions scenario.

Table 2 and Figure 1 provide more information on how the projections differ across the 3 scenarios, and Figure 2 provides information on regional differences by 2090 across the 3 scenarios.



Temperature

Table 2. Projected annual average temperature increase – Metropolitan Sydney

2050

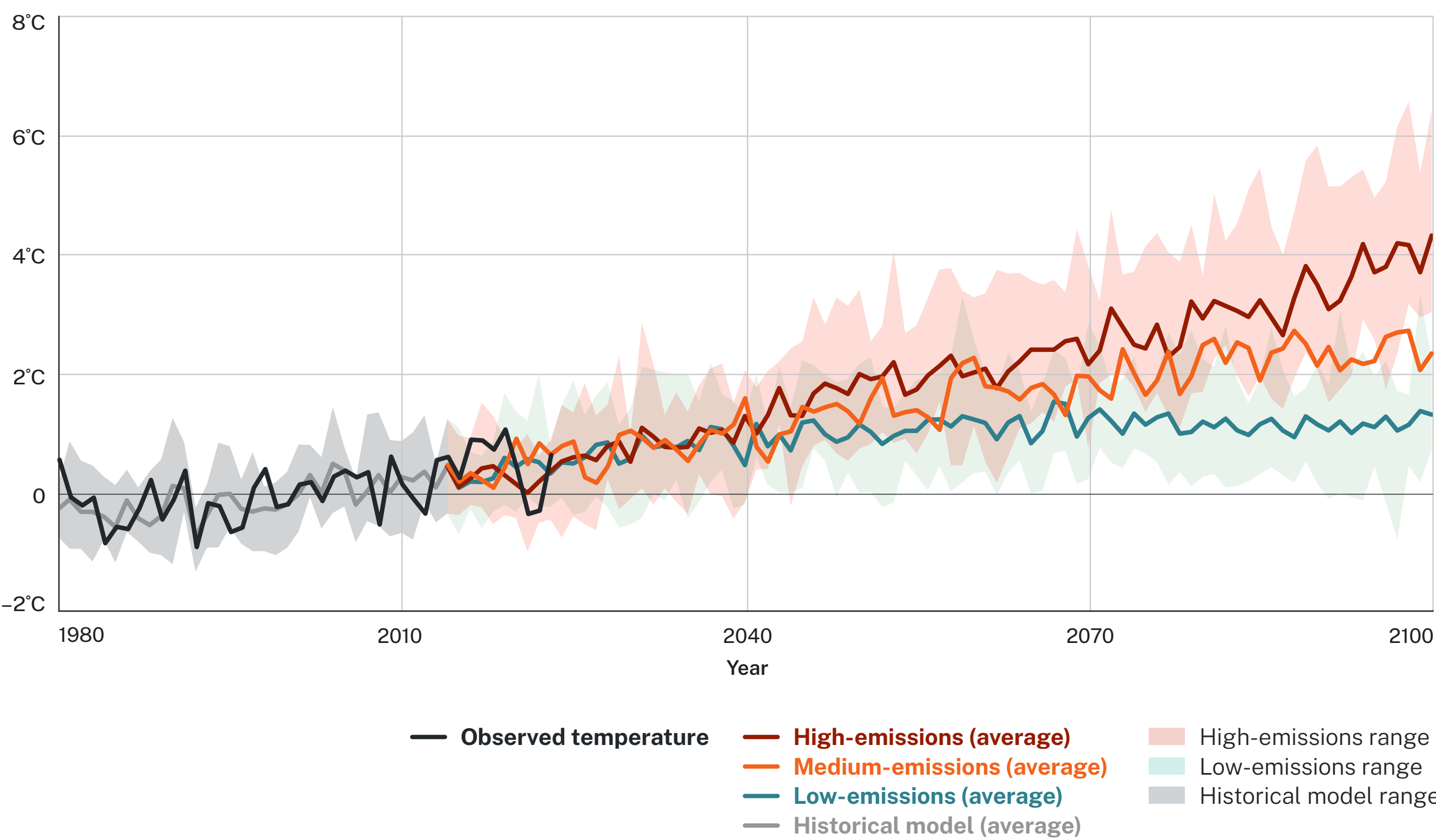
	Low-emissions	Medium-emissions	High-emissions
Temperature	1.0°C (0.6°C to 1.7°C)	1.4°C (0.8°C to 2.0°C)	1.8°C (1.0°C to 2.8°C)
Maximum temperature	1.1°C (0.6°C to 1.9°C)	1.4°C (0.9°C to 2.0°C)	1.9°C (1.1°C to 3.1°C)
Minimum temperature	1.0°C (0.6°C to 1.6°C)	1.4°C (0.8°C to 2.0°C)	1.7°C (0.9°C to 2.6°C)

2090

	Low-emissions	Medium-emissions	High-emissions
Temperature	1.2°C (0.5°C to 2.0°C)	2.4°C (1.7°C to 3.6°C)	3.4°C (2.3°C to 5.0°C)
Maximum temperature	1.3°C (0.5°C to 2.2°C)	2.5°C (1.7°C to 3.8°C)	3.5°C (2.4°C to 5.3°C)
Minimum temperature	1.1°C (0.6°C to 1.8°C)	2.4°C (1.7°C to 3.5°C)	3.5°C (2.4°C to 5.0°C)

The bold number is the ensemble average for the period. Underneath the average is the ensemble range. Temperature increases are additional to the historical model baselines of 16.1°C for average temperature, 22.2°C for average maximum temperature and 11.4°C for average minimum temperature.

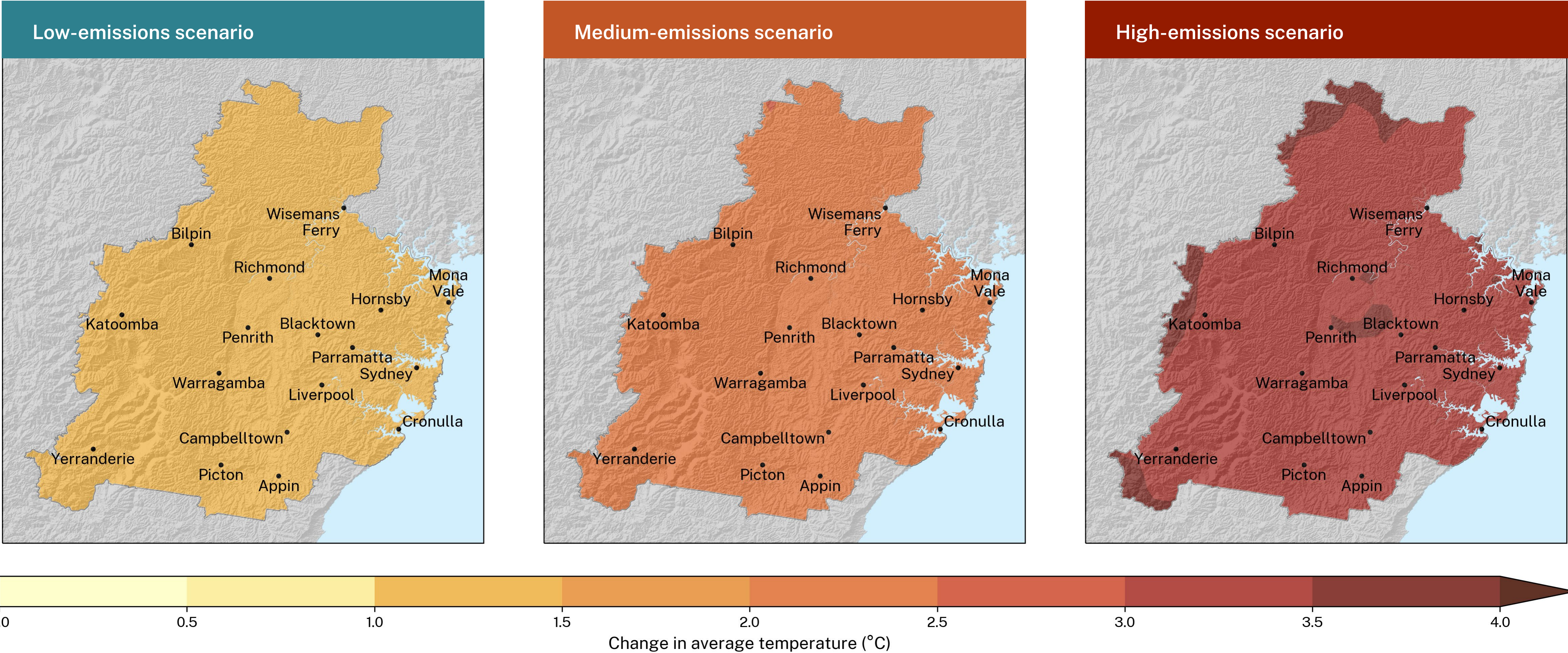
Figure 1. Historical and projected average temperature change – Metropolitan Sydney

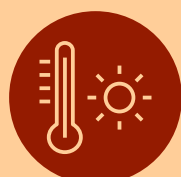




Temperature

Figure 2. Projected change in average temperature by 2090 for Metropolitan Sydney





Hot days

Changes to temperature extremes often have more pronounced impacts than changes in average temperatures.

Hot days will become more frequent

Prolonged hot days, where maximum daily temperatures are equal to or above 35°C, increase the incidence of illness and death – particularly among vulnerable people. Seasonal changes in the number of hot days could have significant impacts on bushfire danger, infrastructure and native species.

The number of hot days varies widely across the Metropolitan Sydney region. During the baseline period, coastal regions and higher elevation areas of the Blue Mountains had on average 5 hot days per year. Greater Western Sydney had more hot days, with an average of 10–15 hot days per year.

Projections

Across the Metropolitan Sydney region, the average number of hot days per year will increase throughout this century (Figure 3).

The number of hot days will increase for all emissions scenarios, with an even greater increase by 2090 under a medium-emissions scenario and a high-emissions scenario (Table 3). The number of hot days is projected to increase across spring, summer and autumn, with the largest increase in summer.

3x

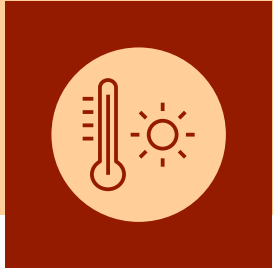
The number of hot days across the Metropolitan Sydney region is projected to approximately triple by 2090 under a high-emissions scenario.

Higher maximum temperatures affect health through heat stress and exacerbate existing health conditions.

Under a low-emissions scenario, there is a minimal increase in the number of hot days between 2050 and 2090, with less than 1 additional day per year projected across the region. However, increases of 6.9 additional hot days per year under a medium-emissions scenario and 10.7 additional hot days per year under a high-emissions scenario are projected during the same period (Table 3).

The changes will occur across most of the region. Western Sydney is projected to experience the greatest increase in the number of hot days (Figure 4.) By 2090, Penrith is projected to experience 9.4 additional hot days per year under a low-emissions scenario, 18.0 additional a medium-emissions scenario and 25.9 under a high-emissions scenario. A medium-emissions scenario is projected to more than double Penrith's baseline period average of 13.9 hot days per year, while a high-emissions scenario is projected to nearly triple Penrith's baseline period average. Comparatively, in the south-east of the region, Cronulla's baseline period average is 4.7 hot days per year. By 2090, Cronulla is projected to experience an additional 3.7 hot days per year under a low-emissions scenario, 5.7 under a medium-emissions scenario and 9.1 under a high-emissions scenario.

Table 3 and Figure 3 provide more information on how the projections differ across the 3 scenarios, and Figure 4 provides information on regional differences by 2090 across the 3 scenarios.



Hot days

Table 3. Projected increase in average annual number of hot days – Metropolitan Sydney

2050

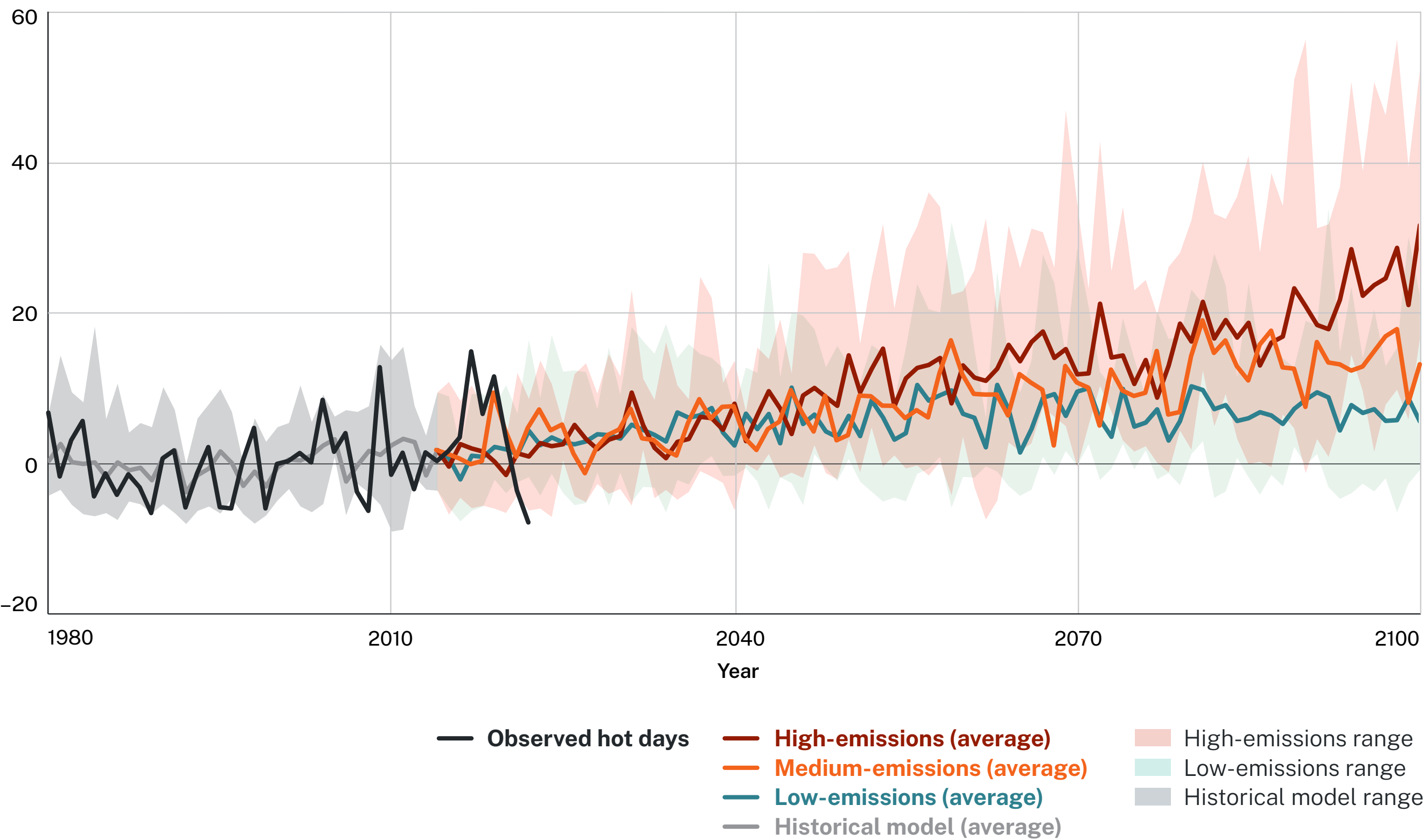
Low-emissions	Medium-emissions	High-emissions
6.2 days (2.6–11.1 days)	7.0 days (3.9 to 9.8 days)	9.7 days (3.7–20.4 days)

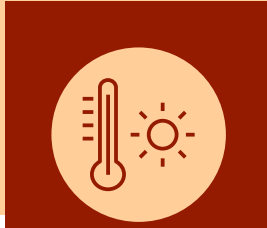
2090

Low-emissions	Medium-emissions	High-emissions
7.3 days (1.9–16.5 days)	13.9 days (7.2 to 24.9 days)	20.4 days (9.5–37.2 days)

The bold number is the ensemble average for the period. Underneath the average is the ensemble range. Hot day increases are additional to the historical model baseline of 8.2 hot days.

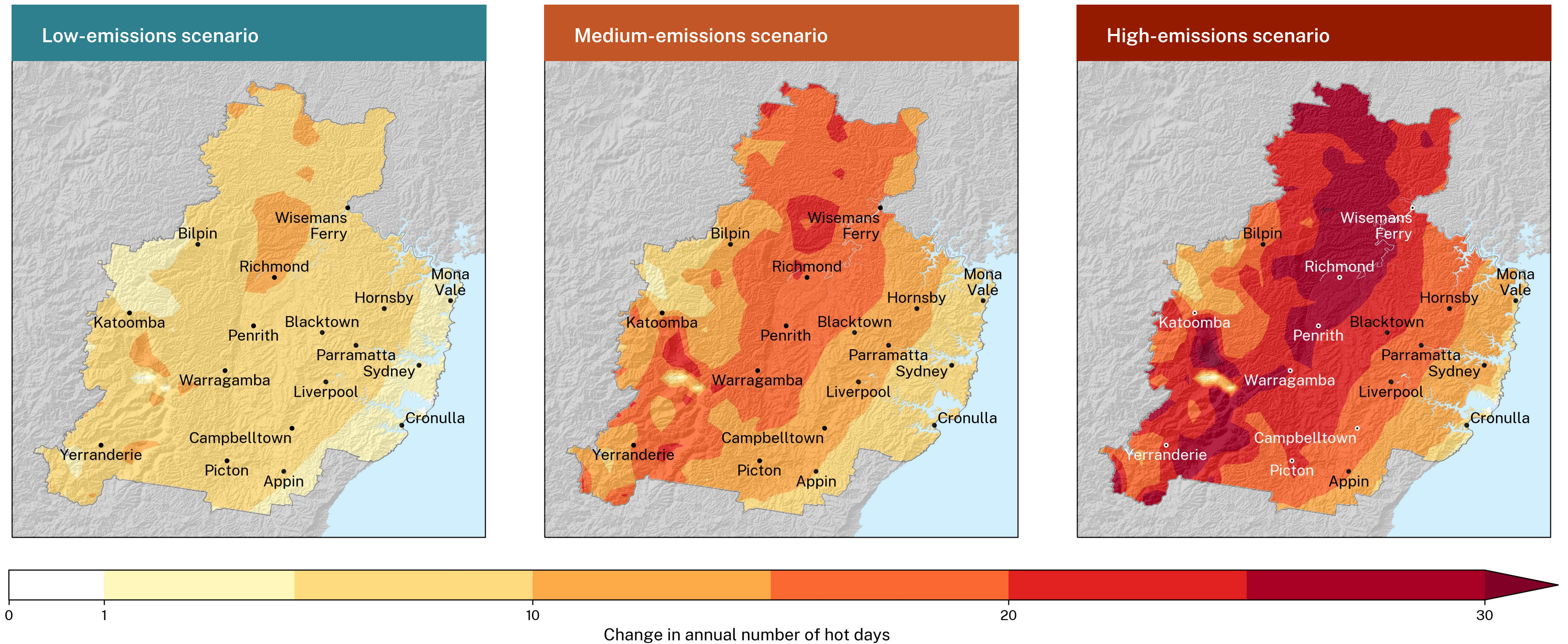
Figure 3. Historical and projected average annual number of hot days – Metropolitan Sydney

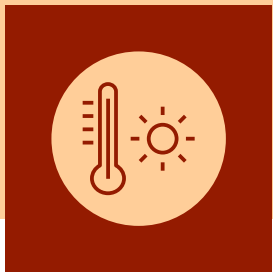




Hot days

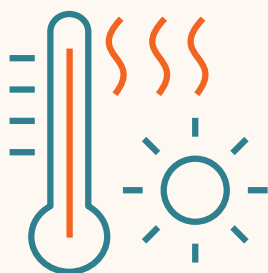
Figure 4. Projected change in annual number of hot days by 2090 for Metropolitan Sydney





Increased heat stress

Significant population growth is expected in the Metropolitan Sydney region in the coming decades, from a population of around 5 million people in 2020 to more than 6.1 million people by 2041.⁷ Heatwaves have been responsible for more human deaths than any other natural hazard, including bushfires and floods. Heatwaves occur when both maximum and minimum temperatures are unusually hot over 3 days, compared to the previous month and historical weather. Heatwaves in 2011 and 2019 led to a 14% rise in NSW hospital admissions. In 2009, the heatwave in Victoria preceding the 2009 bushfires led to 374 deaths, with the bushfires directly responsible for 173 deaths.



Greater Western Sydney is protected to experience the greatest increase in the number of hot days (Figure 4).



Coastal areas will experience a relatively lower increase due to the moderating influence of the ocean.



Increasing urbanisation of the region presents a risk of amplifying the mean temperature increase from climate change through new built structures, the materials used in the built structures and vegetation removal to accommodate urban growth.¹² Climate change impacts on urban heat intensity will be worse under a high-emissions scenario.





Cold nights

Cold nights are important for biodiversity in higher-elevation areas and the viability of important plant species, including some temperate fruits.

Cold nights will decrease

Cold nights are those where the minimum temperature drops below 2°C. These are important for the viability of some important plant species. For example, some common temperate fruit species require sufficiently cold winters to produce flower buds.

The number of cold nights varies widely across the Metropolitan Sydney region. During the baseline period, areas of higher elevation in the Blue Mountains had on average more than 40 cold nights per year. Greater Western Sydney had on average 5–20 cold nights per year, while areas in the south-west of the region had 30–60 cold nights per year. Coastal areas do not typically experience cold nights.

Projections

Across Metropolitan Sydney, the average number of cold nights per year will decrease throughout this century (Figure 5).

The number of cold nights will decrease for the Metropolitan Sydney region by 2050 for all emissions scenarios, with an even greater decrease by 2090 under a medium-emissions scenario and a high-emissions scenario (Table 4). The number of cold nights is projected to decrease across autumn, winter and spring, with the largest decreases in winter.

Under a high-emissions scenario, the number of cold nights in areas of the Blue Mountains could reduce by more than 80% by 2090.

Under a low-emissions scenario, the number of cold nights in areas of the Blue Mountains could reduce by 35% by 2090.

Cold nights will decrease across some parts of the region, particularly for higher elevation areas (Figure 6). Coastal areas will not experience any changes, as they do not experience cold nights. The greatest decreases are projected to occur for the Blue Mountains and Kanangra-Boyd National Park. By 2090, Blackheath is projected to have 16.0 fewer cold nights per year under a low-emissions scenario, 30.2 fewer cold nights per year under a medium-emissions scenario and 38.2 fewer cold nights per year under a high-emissions scenario. A medium-emissions scenario is projected to reduce Blackheath's 46.2 cold nights per year baseline period average by more than 60%, while a high-emissions scenario is projected to reduce Blackheath's baseline period average by more than 80%.

Table 4 and Figure 5 provide more information on how the projections differ across the 3 scenarios, and Figure 6 provides information on regional differences by 2090 across the 3 scenarios.



Cold nights

Table 4. Projected decrease in average annual number of cold nights – Metropolitan Sydney

2050

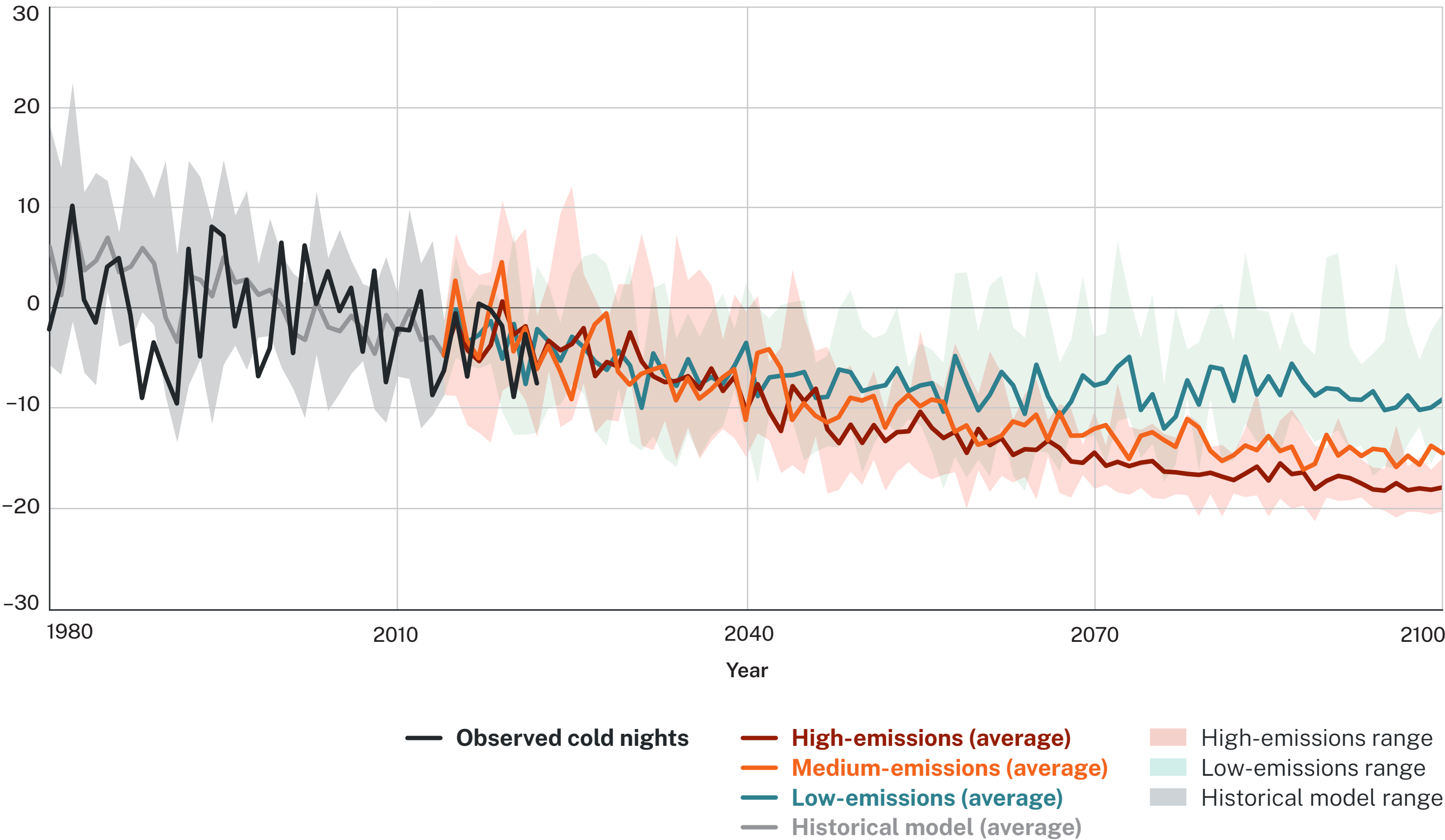
Low-emissions	Medium-emissions	High-emissions
7.2 days (4.2 to 10.6 days)	9.4 days (5.1 to 12.2 days)	11.3 days (7.0 to 14.0 days)

2090

Low-emissions	Medium-emissions	High-emissions
8.1 days (4.5 to 11.4 days)	14.4 days (10.5 to 17.0 days)	17.0 days (13.5 to 19.3 days)

The bold number is the ensemble average for the period. Underneath the average is the ensemble range. Cold night decreases are relative to the historical model baseline of 19.2 cold nights.

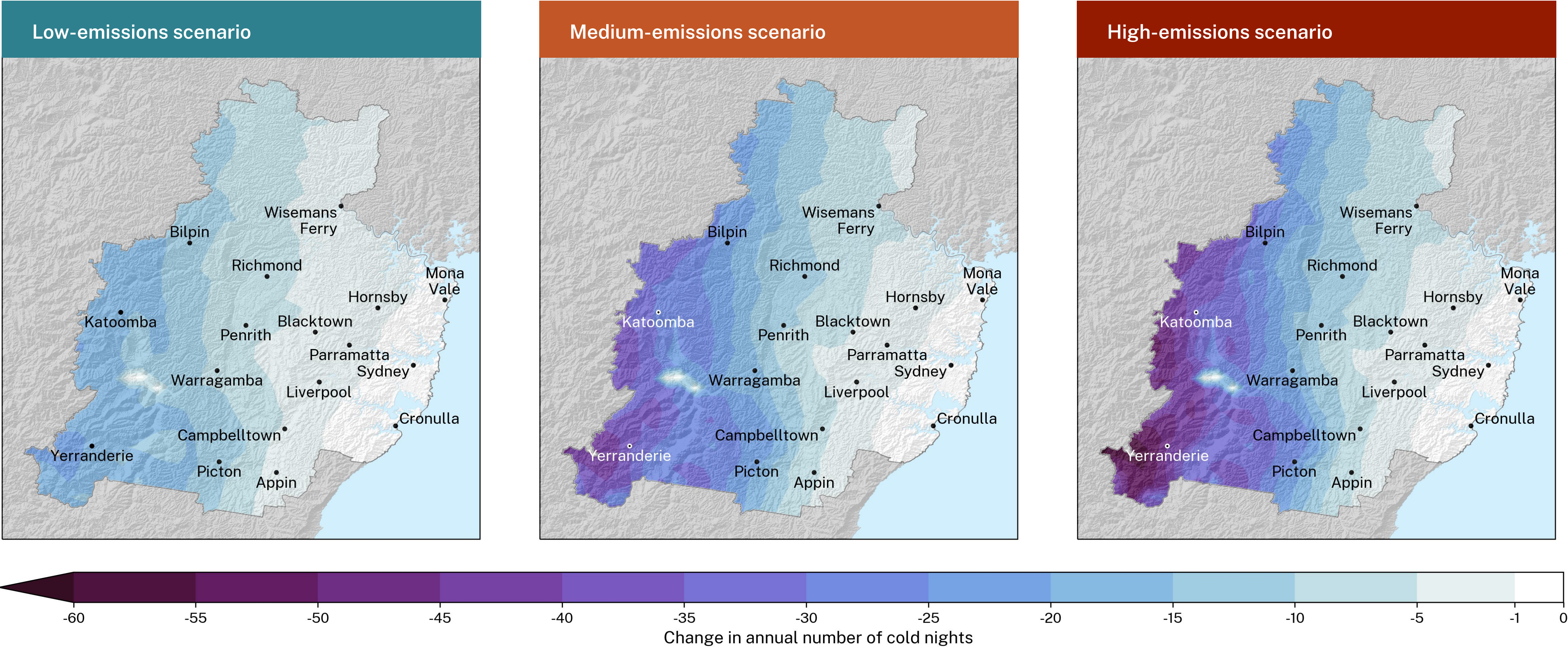
Figure 5. Historical and projected change in annual number of cold nights – Metropolitan Sydney





Cold nights

Figure 6. Projected change in annual number of cold nights by 2090 for Metropolitan Sydney





Rainfall

Rainfall is projected to remain variable

Climate change will influence rainfall patterns and the total amount of rainfall that NSW receives. These changes may have widespread impacts on water security, agricultural productivity and native species' reproductive cycles. For example, subtropical rainforest communities may contract due to more variable rainfall and changes to humidity and evapotranspiration. NSW has experienced rainfall extremes in recent decades, with significant impacts on communities, infrastructure and natural ecosystems.

Modelling rainfall is more difficult than modelling temperature due to the complexities of the weather systems that generate rain. NARClIM projections capture a range of plausible climate futures under the 3 emissions scenarios, including wet and dry outcomes. This means that rainfall is inherently more variable in the NARClIM projections than temperature, and the full range of rainfall projections should be taken into account. This can be explored further on the [AdaptNSW Interactive Map](#).

This snapshot provides data on average rainfall change and does not provide data on rainfall extremes or the impacts of climate change on flooding.

Observed annual rainfall across the Metropolitan Sydney region averages about 880 mm.⁴ Rainfall is typically higher in coastal areas and in higher elevation areas of the Blue Mountains compared to inland areas such as Greater Western Sydney. There is typically more rainfall in summer and autumn than in winter or spring. The driest year on record was 1944, with an average rainfall of 440 mm across the region. A notably dry year was also experienced in 2019, with approximately 600 mm of rainfall across the region.⁴

A decrease in average winter rainfall of 30–35% by 2090 is projected for Metropolitan Sydney under a medium-emissions and high-emissions scenarios.

Projections

Annual average rainfall in the region is projected to remain variable throughout this century (Figure 7). By 2090, on average, annual rainfall is projected to decrease by 10% under a low-emissions scenario, by 15% under a medium-emissions scenario and by 9% under a high-emissions scenario (Table 5).

By 2090, average summer rainfall is projected to decrease by 12% under a low-emissions scenario, by 15% under a medium-emissions scenario and by 3% under a high-emissions scenario (Table 5).

Average autumn rainfall is projected to change by 10% or less across the region by 2090 under all emissions scenarios.

By 2090, average winter rainfall is projected to decrease by 20% under a low-emissions scenario, by 30% under a medium-emissions scenario and by 35% under a high-emissions scenario (Table 5). The Blue Mountains and Western Sydney are projected to experience the greatest decreases in average winter rainfall. For average winter rainfall, Blackheath is projected to experience a 21% decrease under a low-emissions scenario, a 34% decrease under a medium-emissions scenario and a 38% decrease under a high emissions scenario.

Average spring rainfall is projected to change by 10% or less across the region by 2090 under all emissions scenarios.

Refer to the [Interactive Map](#) for further seasonal information.

Table 5 and Figure 7 provide more information on how the projections differ across the 3 scenarios, and Figures 8 to 12 provide information on regional differences by 2090 across the 3 scenarios by season.



Rainfall

Table 5. Projected change to average rainfall – Metropolitan Sydney

2050

	Low-emissions	Medium-emissions	High-emissions
Annual	-7.2% (-18.5% to +12.6%)	-8.4% (-19.8% to +7.1%)	-16.3% (-28.6% to +1.3%)
Summer	-9.9% (-21.0% to +4.1%)	-10.3% (-23.6% to +29.6%)	-18.9% (-39.8% to +5.0%)
Autumn	-0.5% (-22.3% to +16.7%)	-0.3% (-22.2% to +25.2%)	-10.1% (-29.4% to +14.2%)
Winter	-17.2% (-41.0% to +36.5%)	-26.4% (-35.0% to +4.7%)	-33.0% (-51.7% to -2.7%)
Spring	-2.8% (-13.4% to +15.4%)	0.7% (-22.2% to +26.4%)	-4.2% (-28.9% to +15.8%)

2090

	Low-emissions	Medium-emissions	High-emissions
Annual	-9.7% (-22.4% to +5.7%)	-14.6% (-30.7% to +0.4%)	-9.2% (-36.9% to +24.6%)
Summer	-12.4% (-31.1% to +13.8%)	-14.9% (-28.6% to +32.9%)	-2.6% (-42.0% to +33.6%)
Autumn	-1.7% (-24.7% to +19.6%)	-7.2% (-36.8% to +9.4%)	-1.5% (-19.6% to +41.6%)
Winter	-20.3% (-38.9% to -2.1%)	-30.0% (-47.4% to +11.2%)	-35.1% (-65.5% to +11.3%)
Spring	-6.6% (-24.4% to +12.3%)	-10.1% (-34.1% to +13.3%)	-7.4% (-34.8% to +16.4%)

The bold number is the ensemble average for the period. Underneath the average is the ensemble range. Percentages changes in annual average rainfall are relative to the historical model baseline of 916 mm. Average summer rainfall is relative to a baseline of 312 mm, average autumn rainfall is relative to a baseline of 264 mm, average winter rainfall is relative to a baseline of 171 mm and average spring rainfall is relative to a baseline of 170 mm.

Figure 7. Historical and projected change in average rainfall – Metropolitan Sydney

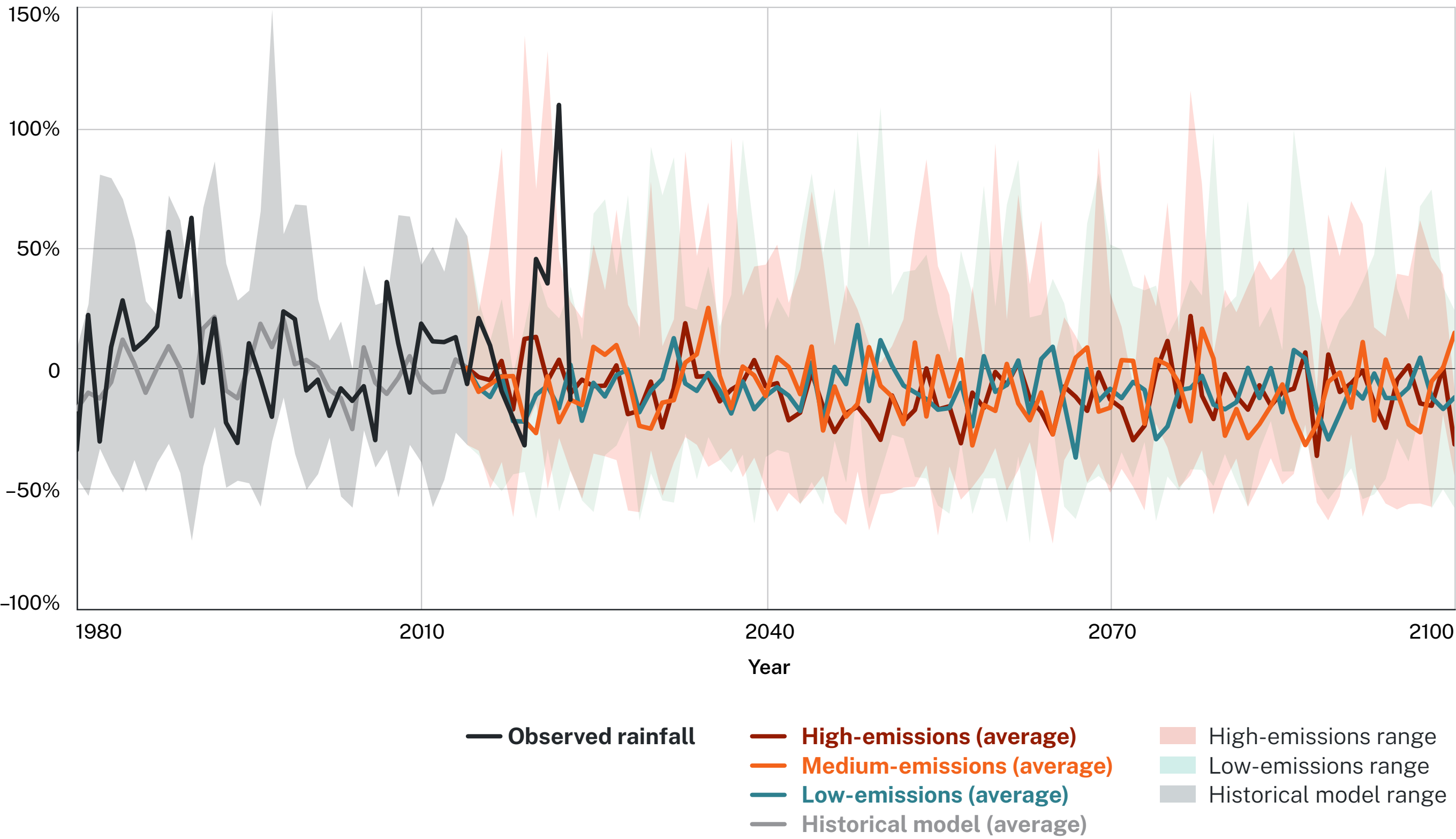




Figure 8. Projected change to average annual rainfall by 2090 for Metropolitan Sydney

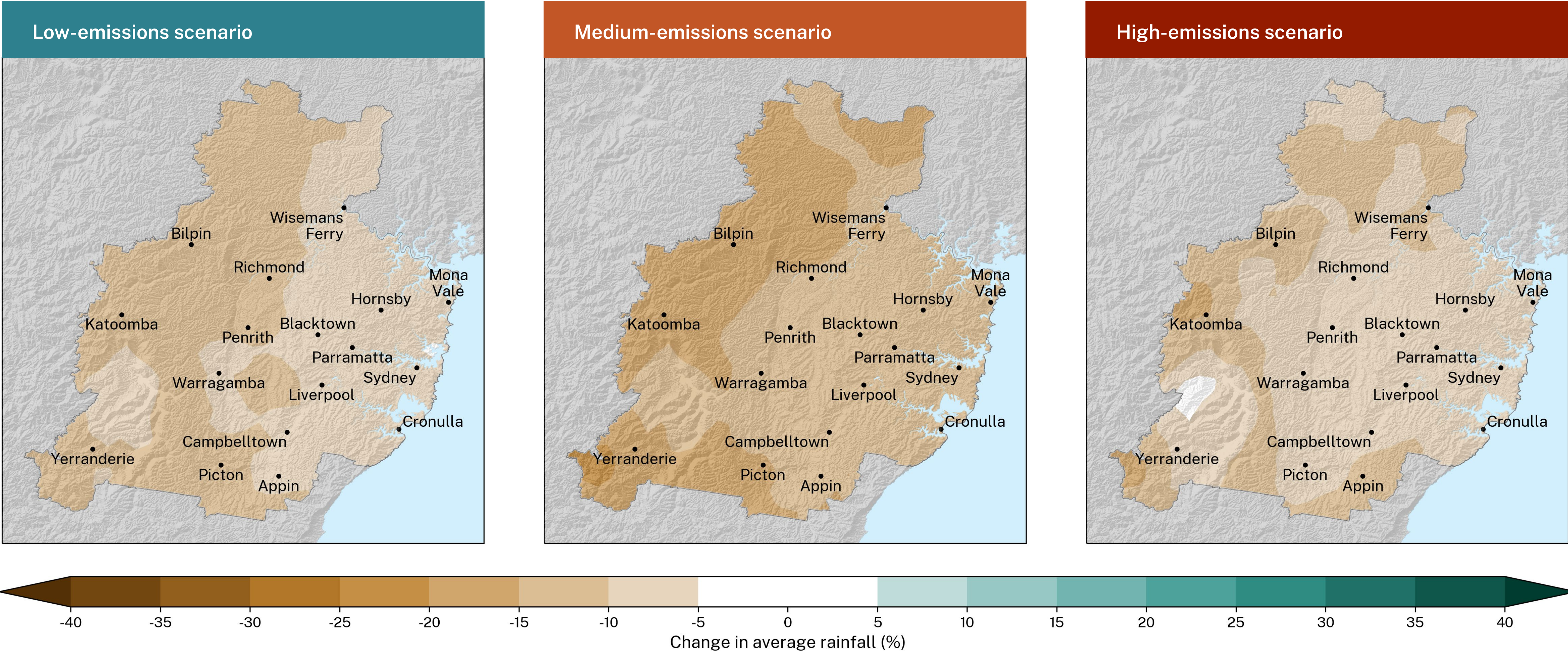




Figure 9. Projected change to average summer rainfall by 2090 for Metropolitan Sydney

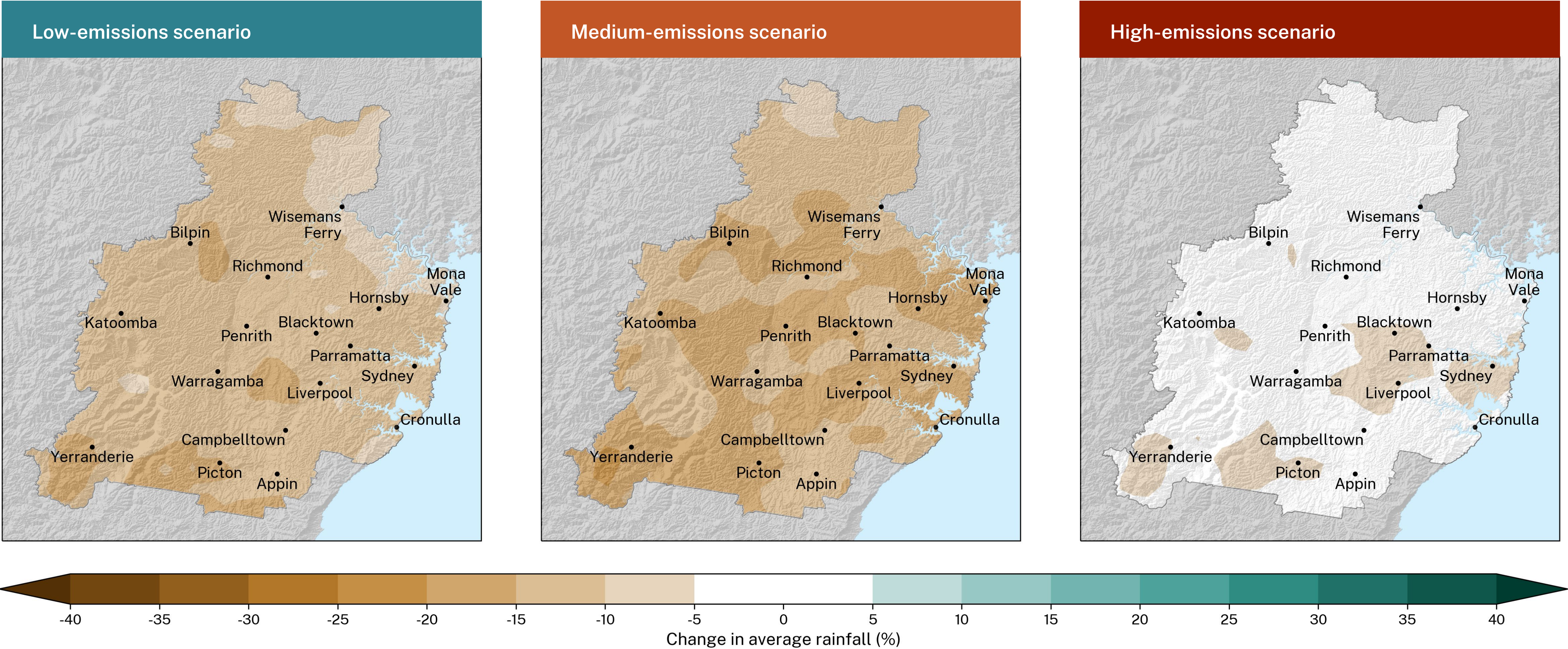




Figure 10. Projected change to average autumn rainfall by 2090 for Metropolitan Sydney

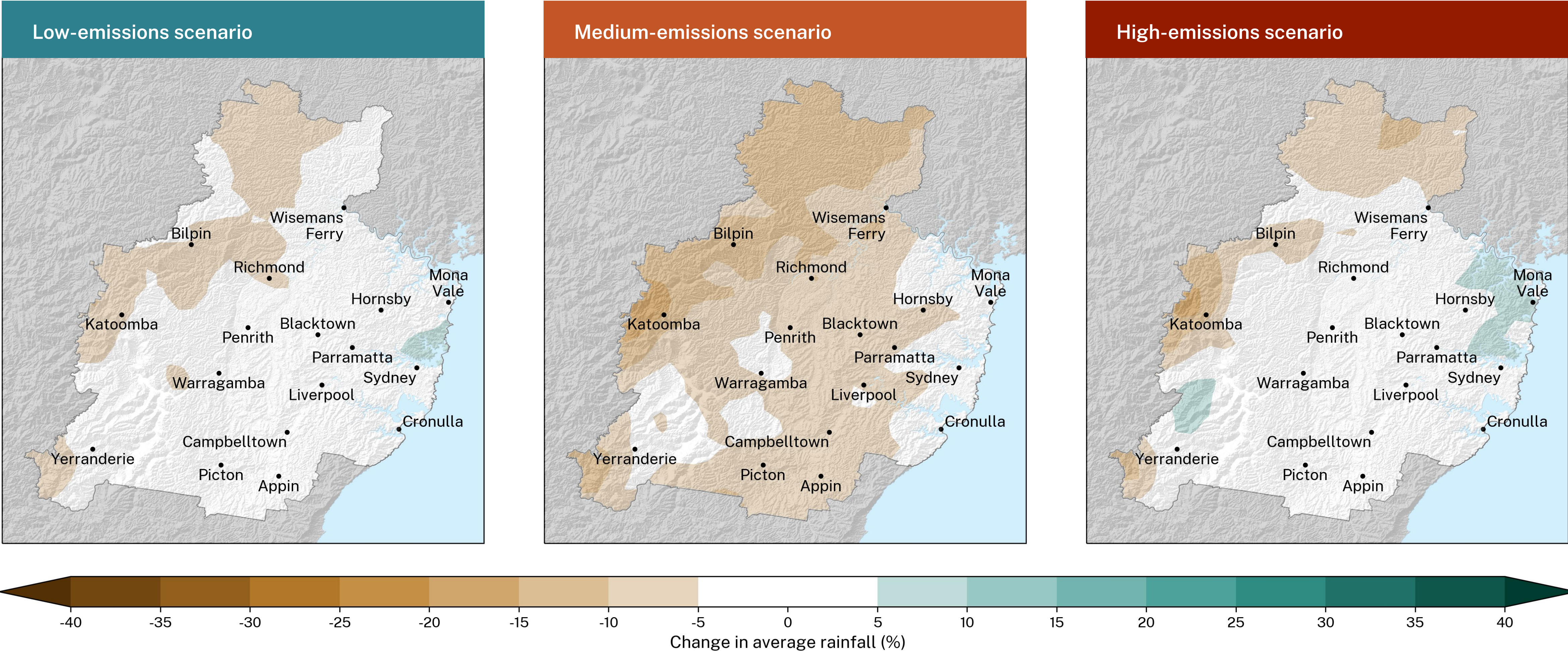




Figure 11. Projected change to average winter rainfall by 2090 for Metropolitan Sydney

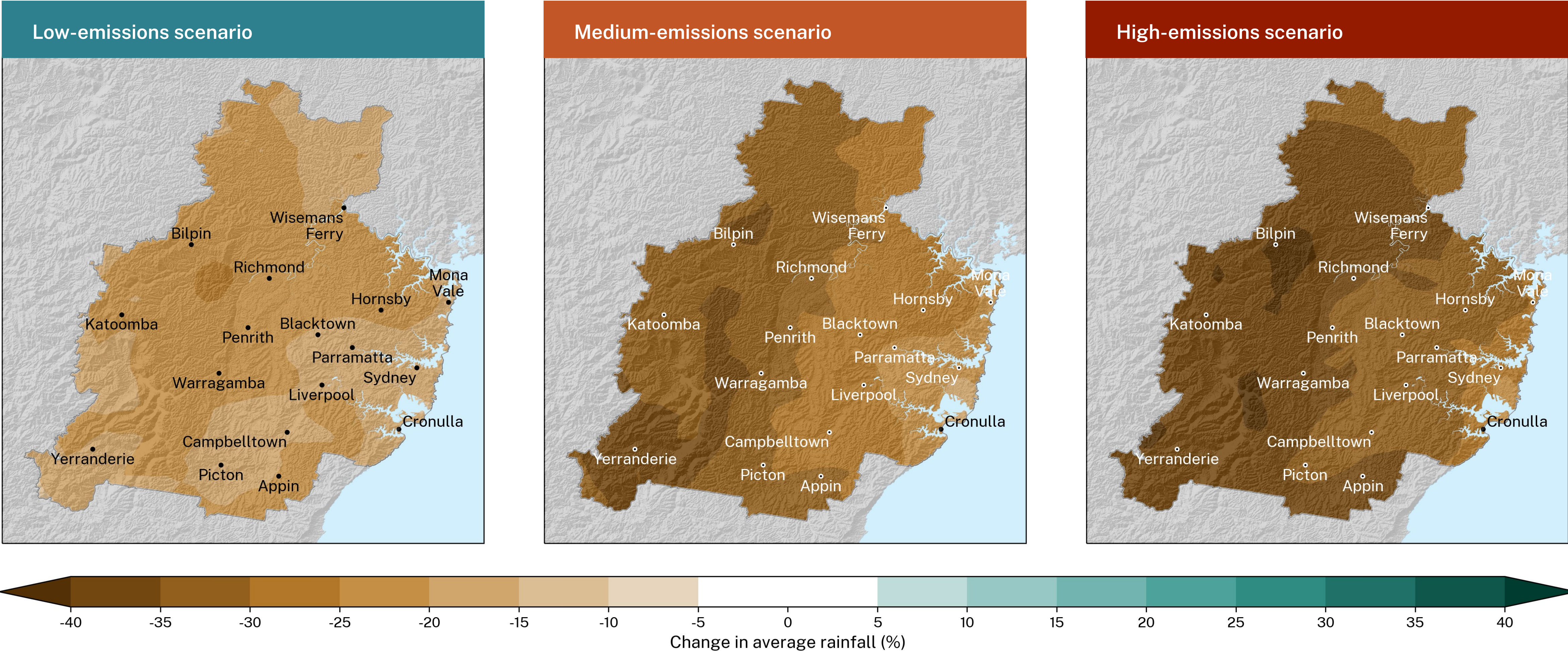
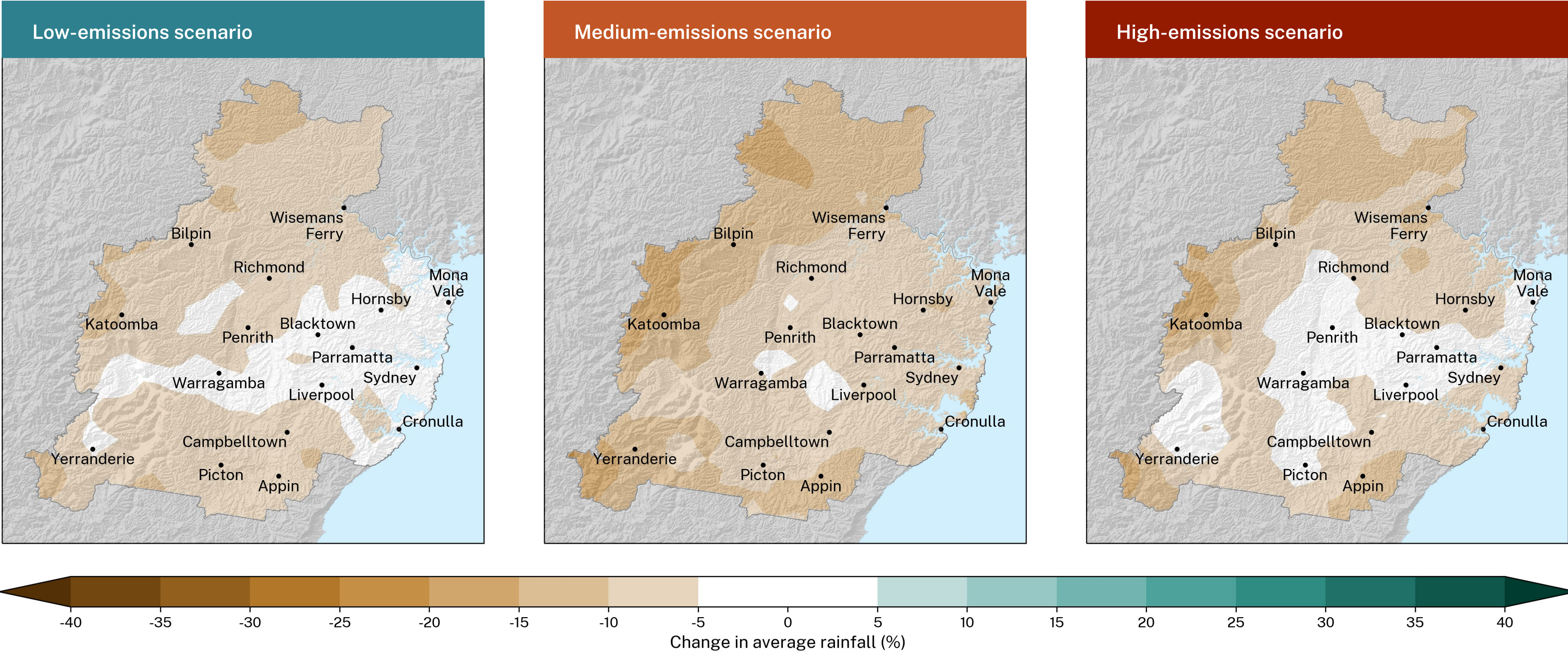




Figure 12. Projected change to average spring rainfall by 2090 for Metropolitan Sydney





Severe fire weather

Severe fire weather will increase

The Forest Fire Danger Index (FFDI) represents an estimate of fire weather risk. The FFDI is calculated from temperature, relative humidity and wind speed, as well as an index representing fuel dryness.

Severe fire weather (FFDI greater than 50) is most likely in summer and spring. Fire weather was the strongest determining factor of house loss during the Black Summer bushfires.⁷ FFDI was monitored by weather stations across NSW until the introduction in 2022 of the Australian Fire Danger Rating System. FFDI is used in this snapshot as it can be simulated using the NARClIM projections, whereas data used by the Australian Fire Danger Rating System currently cannot. FFDI also provides a long history of data and gives context to the NARClIM projections.

Projections

Across Metropolitan Sydney, the average number of severe fire weather days per year will increase throughout this century (Figure 13).

The average number of severe fire weather days will increase for the Metropolitan Sydney region by 2050 for all emissions scenarios, with an even greater increase projected by 2090 under a medium-emissions scenario and a high-emissions scenario (Table 6). The number of severe fire weather days is projected to increase during spring and summer, with the largest increase in spring.

Increases to severe fire weather days will occur across most of the region (Figure 14). The greatest increases are projected to occur for Greater Western Sydney, with only small increases projected in some areas such as Cronulla and Blackheath. By 2090, Penrith is projected to experience 1.7 additional severe fire weather days per year under

2x

Under a high-emissions scenario, the number of severe fire weather days per year across Metropolitan Sydney could nearly double by 2090.

Fire weather was the strongest determining factor of house loss during the Black Summer bushfires.⁸

a low-emissions scenario, 3.6 under a medium-emissions scenario and 4.8 under a high-emissions scenario. A high-emissions scenario is projected to nearly double Penrith's baseline period average of 5.0 severe fire weather days per year.

Comparatively, in the south-east of the region, Cronulla's baseline period average is 2.0 severe fire weather days per year. By 2090, Cronulla is projected to experience 0.6 additional severe fire weather days per year under a low-emissions scenario, 1.2 under a medium-emissions scenario and 1.6 under a high-emissions scenario.

Table 6 and Figure 13 provide more information on how the projections differ across the 3 scenarios, and Figure 14 provides information on regional differences by 2090 across the 3 scenarios.



Table 6. Projected increase in average annual number of severe fire weather days – Metropolitan Sydney

2050

Low-emissions	Medium-emissions	High-emissions
0.7 days (0.1 to 1.8 days)	0.8 days (0.0 to 1.8 days)	1.2 days (0.1 to 3.1 days)

2090

Low-emissions	Medium-emissions	High-emissions
0.8 days (-0.7 to 2.5 days)	1.7 days (0.1 to 4.1 days)	2.5 days (0.1 to 6.2 days)

The bold number is the ensemble average for the period. Underneath the average is the ensemble range. Severe fire weather increases are additional to the historical model baseline of 1.7 severe fire weather days.

Figure 13. Historical and projected change in annual number of severe fire weather days – Metropolitan Sydney

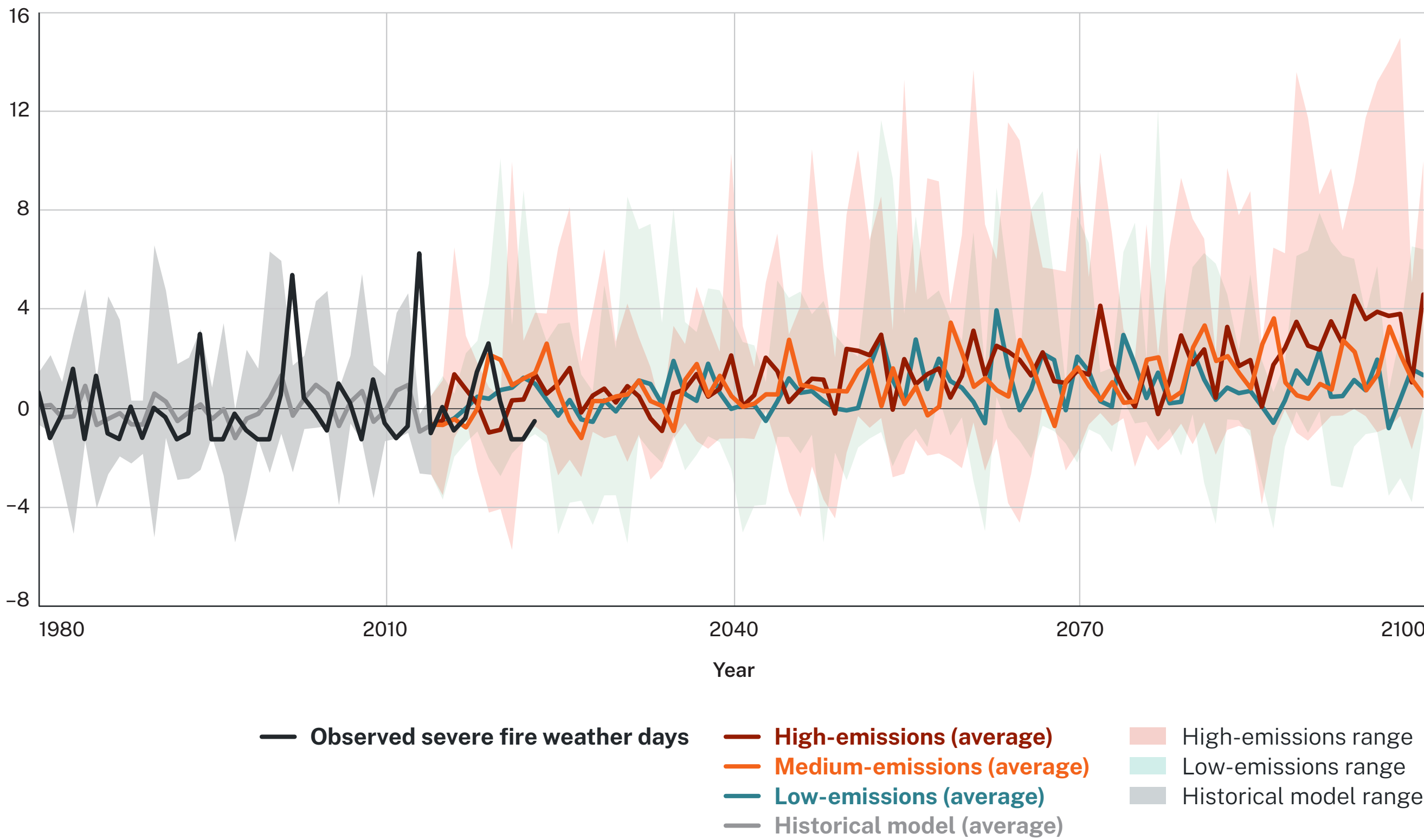
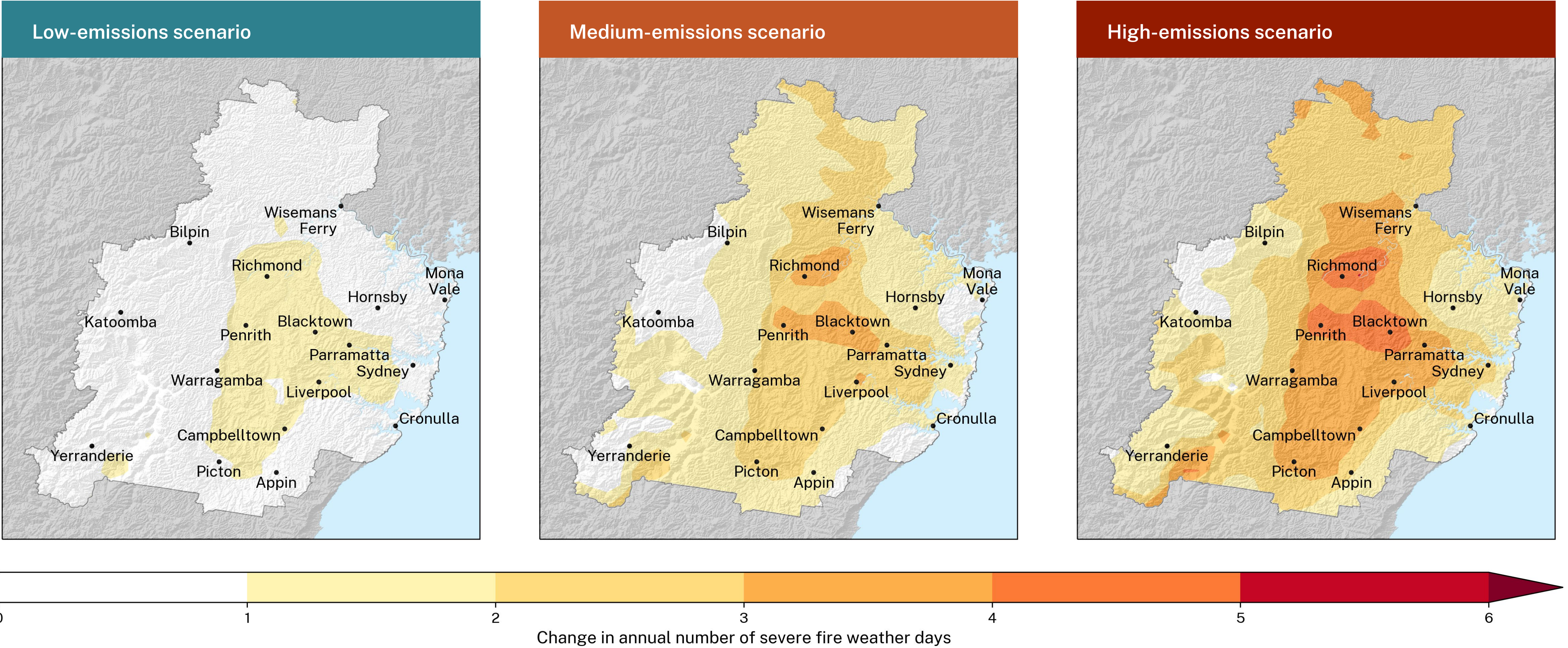




Figure 14. Projected change to average annual number of severe fire weather days by 2090 for Metropolitan Sydney





Bushfires

The region experienced significant impacts during the 2019–20 bushfire season with extensive impacts to communities, infrastructure and natural ecosystems.⁸ There were 116 premature deaths, 245 cardiovascular disease and 890 respiratory disease hospitalisations across the region from poor air quality caused by the bushfires.⁹ Approximately 81% or 834,000 hectares of the Greater Blue Mountains World Heritage Area was burnt, with severe impacts to ecosystems and wildlife.¹⁰

Metropolitan Sydney, with its extensive areas of bushland, is highly vulnerable to the impacts of increasing number of days of severe fire weather. Climate change is expected to reduce the interval between fires, increase fire intensity, and shorten the window for safe fire management activities.¹¹



Greater Western Sydney will experience greater increases in the number of severe fire weather days compared to other areas of the region.



Although bushfires are a natural part of the Australian environment, climate change is increasing the frequency, duration, extent and intensity of ‘fire weather’ in south-east Australia.^{14,15}



Severe fire danger days, which create the underlying conditions for large-scale bushfires, are expected to become more common in the future, particularly under a high-emissions scenario.





Climate action and further information

Climate action

The NARClIM projections for the low-, medium- and high-emissions scenarios highlight the stark difference in climate change impacts that will be experienced under each scenario. The differences provide a reminder of the required action across the world to reduce emissions, and specifically within NSW to meet our legislated Net Zero by 2050 emissions reduction targets. This is our best chance at ensuring the future projections under the high-emissions scenario are avoided. The NARClIM projections highlight the importance of taking action to adapt to the impacts of climate change. For more resources on reducing emissions and adapting to the impacts of climate change, visit [AdaptNSW](#).

Additional resources

- For information on other climate change impacts, including sea level rise, visit [AdaptNSW](#)
- [Climate change resources for local government on AdaptNSW](#)
- Generate detailed climate information based on your local government area using [SEED](#)
- [Climate Data Portal](#)
- [NARClIM case studies](#)
- [Climate risk ready NSW guide](#)
- [Local government climate change action in NSW: a guide to leadership](#)

Further information

NARClIM projections are delivered with support from: the ACT, South Australian, Victorian and Western Australian governments; National Computational Infrastructure; Murdoch University; and the University of New South Wales. Detailed information on the methodology and application of the projections can be found on the AdaptNSW website. Climate change information in this snapshot is delivered as part of the NSW Government's commitment to 'Publish regularly updated and improved local level climate change projections' under Action 3 of the [NSW climate change adaptation strategy](#).

References

1. O'Neill et al. 2017, [The roads ahead: Narratives for shared socioeconomic pathways describing world futures in the 21st century](#). *Global Environmental Change*, 42, 169–180.
2. Riahi et al. 2017, [The Shared Socioeconomic Pathways and their energy, land use, and greenhouse gas emissions implications: An overview](#). *Global Environmental Change*, 42, 153–168.
3. [Long-term temperature record](#) – webpage.
4. [About Australian Gridded Climate Data maps and grids](#) – webpage.
5. Hajat et al. 2010, [Health effects of hot weather: from awareness of risk factors to effective health protection](#). *The Lancet*, 375(9717), 856–863.
6. Parsons 2014, [human thermal environments: the effects of hot, moderate, and cold environments on human health, comfort, and performance](#). CRC Press.
7. Price et al. 2020, [Probability of house destruction. Theme 3A. People and Property Impacts](#), Bushfire Risk Management Research Hub for the NSW Bushfire Inquiry 2020 – webpage
8. Owens & O'Kane 2020, [Final report of the NSW Bushfire Inquiry](#), Department of Premier and Cabinet, Sydney.
9. Nguyen et al. 2021, [The summer 2019–2020 wildfires in east coast Australia and their impacts on air quality and health in New South Wales, Australia](#), *International Journal of Environmental Research and Public Health*, 18:7.
10. DPIE 2020, [NSW fire and the environment 2019–20 summary](#), Department of Planning, Industry and Environment, Sydney.
11. Hennessy et al. 2007, [Australia and New Zealand. In Climate Change 2007: impacts, adaptation and vulnerability](#). Cambridge University Press (CUP), 2007, 507–540.
12. IPCC 1997, [The regional impacts of climate change: an assessment of vulnerability](#). Cambridge University Press, UK.
13. Adams et al. 2015, [Impacts of land-use change on Sydney's future temperatures](#), Office of Environment and Heritage, Sydney
14. Van Oldenborgh et al. 2021, [Attribution of the Australian bushfire risk to anthropogenic climate change](#). *Natural Hazards and Earth System Sciences Discussions*, 2020, 1–46
15. Dowdy et al. 2019, [Future changes in extreme weather and pyroconvection risk factors for Australian wildfires](#), *Scientific Reports*, 9, 10073



Photo credits:

Cover page: Ocean and Cliffs. Beautiful town at sea side near Bondi beach, Sydney, CoolR/Shutterstock; Rough stormy blue ocean waves, Progressman/Adobe Stock; Storm waves crashing coastline, Jakob de Zwart

Contents:

p.2: The Dark Emu Overhead, Alan Dyer
p.3: Revegetation in Australia, MarkPlovesan/iStock
p.7: Grand Canyon Walking Track, Blackheath, Mark Bean/Destination NSW; Aerial, Manly, Daniel Tran/Destination NSW
p.9: Surfer coming out of the ocean at sunrise, Pat Suraseang/Destination NSW
p.12: Hot day, Serg64/Shutterstock
p.15: Aerial photography of Sydney skyline cityscape, Andrew Merry/Getty Images
p.16: Frost on the farm, MacierPhotography/iStock
p.19: Rainforest, New South Wales, Zaharov/iStock
p.26: Forest fire, byronsdad/iStock/ NPWS fire personnel hosing flames. Phillip Tattersall/DCCEEW
p.29: Sydneys air pollution is so bad its setting off fire alarms, Brendon Thorne/Bloomberg Getty Images
p.30: Putting in a remote Rako line fire control, Michael Jarman/DCCEEW

© 2025 State of NSW

With the exception of photographs, the State of NSW and Department of Climate Change, Energy, the Environment and Water (DCCEEW) are pleased to allow this material to be reproduced in whole or in part for educational and non-commercial use, provided the meaning is unchanged and its source, publisher and authorship are acknowledged. Specific permission is required for the reproduction of photographs. DCCEEW has compiled this report in good faith, exercising all due care and attention. No representation is made about the accuracy, completeness or suitability of the information in this publication for any particular purpose. DCCEEW shall not be liable for any damage which may occur to any person or organisation taking action or not on the basis of this publication. Readers should seek appropriate advice when applying the information to their specific needs. All content in this publication is owned by DCCEEW and is protected by Crown Copyright, unless credited otherwise. It is licensed under the Creative Commons Attribution 4.0 International (CC BY 4.0), subject to the exemptions contained in the licence. The legal code for the licence is available at Creative Commons. DCCEEW asserts the right to be attributed as author of the original material in the following manner: © State of New South Wales and Department of Climate Change, Energy, the Environment and Water 2024.