

RESILIENCE BLUEPRINT



CANBERRA REGION
JOINT ORGANISATION

RESILIENCE
BLUEPRINT



This project is jointly funded by the Commonwealth and the New South Wales Government through grants awarded under the Bushfire Community Recovery and Resilience Fund and the Bushfire Local Economic Recovery Fund. Although funding for this product has been provided by both the Australian and NSW Governments, the material contained herein does not necessarily represent the views of either government.



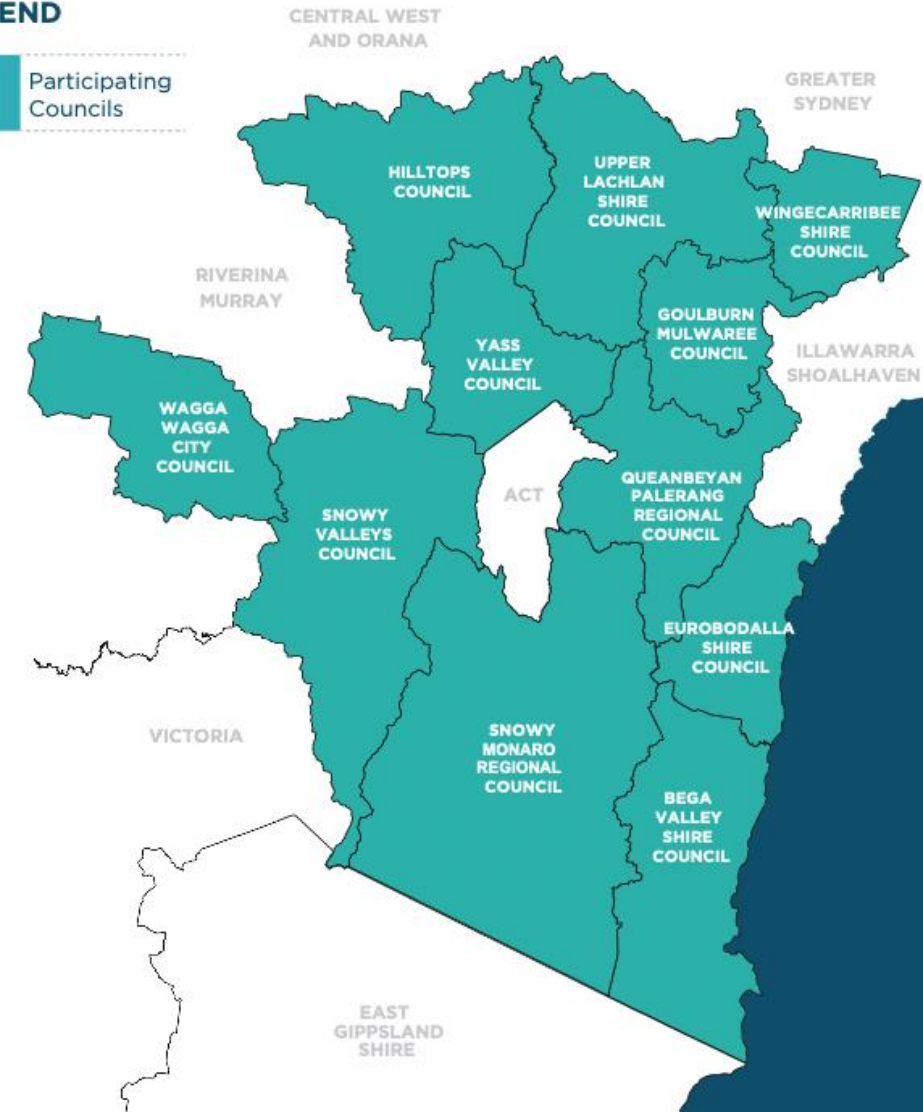
CANBERRA REGION
JOINT ORGANISATION



Blueprint purpose

- The architecture to create change for a more resilient and climate-ready future
- Guiding our focus and investment to adapt to a changing world
- How we work together to do things differently
- Our roles in and pathways toward a more resilient tomorrow

LEGEND

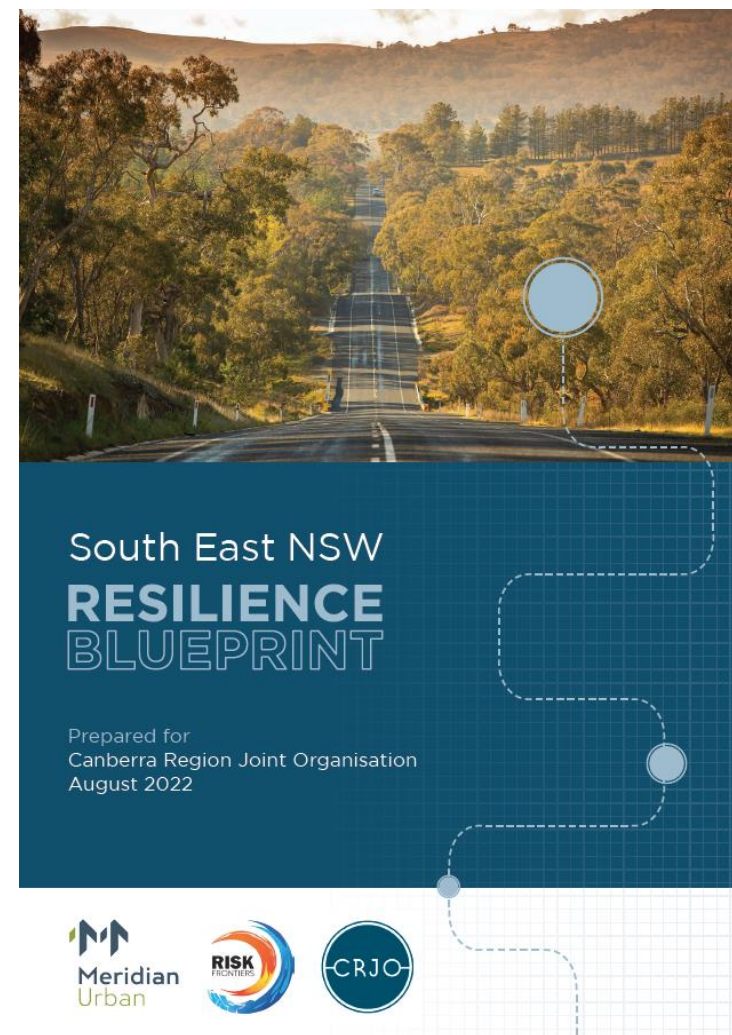


Regional Joinedupedness



Blueprint objectives


1. Addresses climate change as a priority
2. Is grounded in lessons learnt
3. Has key decision-maker support
4. Is developed collaboratively with councils and communities
5. Aligns with Commonwealth, state and local government initiatives.



Engagement snapshot

OVER 2,072 PARTICIPANTS

431  **WORKSHOP PARTICIPANTS**

345  **ONLINE SURVEY PARTICIPANTS**

285  **ONLINE PANEL PARTICIPANTS**



11  **COUNCILLOR BRIEFINGS**

13  **DROP IN SESSIONS**

11  **COUNCIL WORKSHOPS**

12  **COMMUNITY WORKSHOPS**

Blueprint overview

1.



Resilience Blueprint

Directions framework:
Themes
Priorities
Strategies

2.



Resilience Assessment

Regional context
Hazards and risks in
a changing climate

3.



Walking the journey

**What resilience means
in South East NSW**
How the Blueprint
was developed
Using the Blueprint

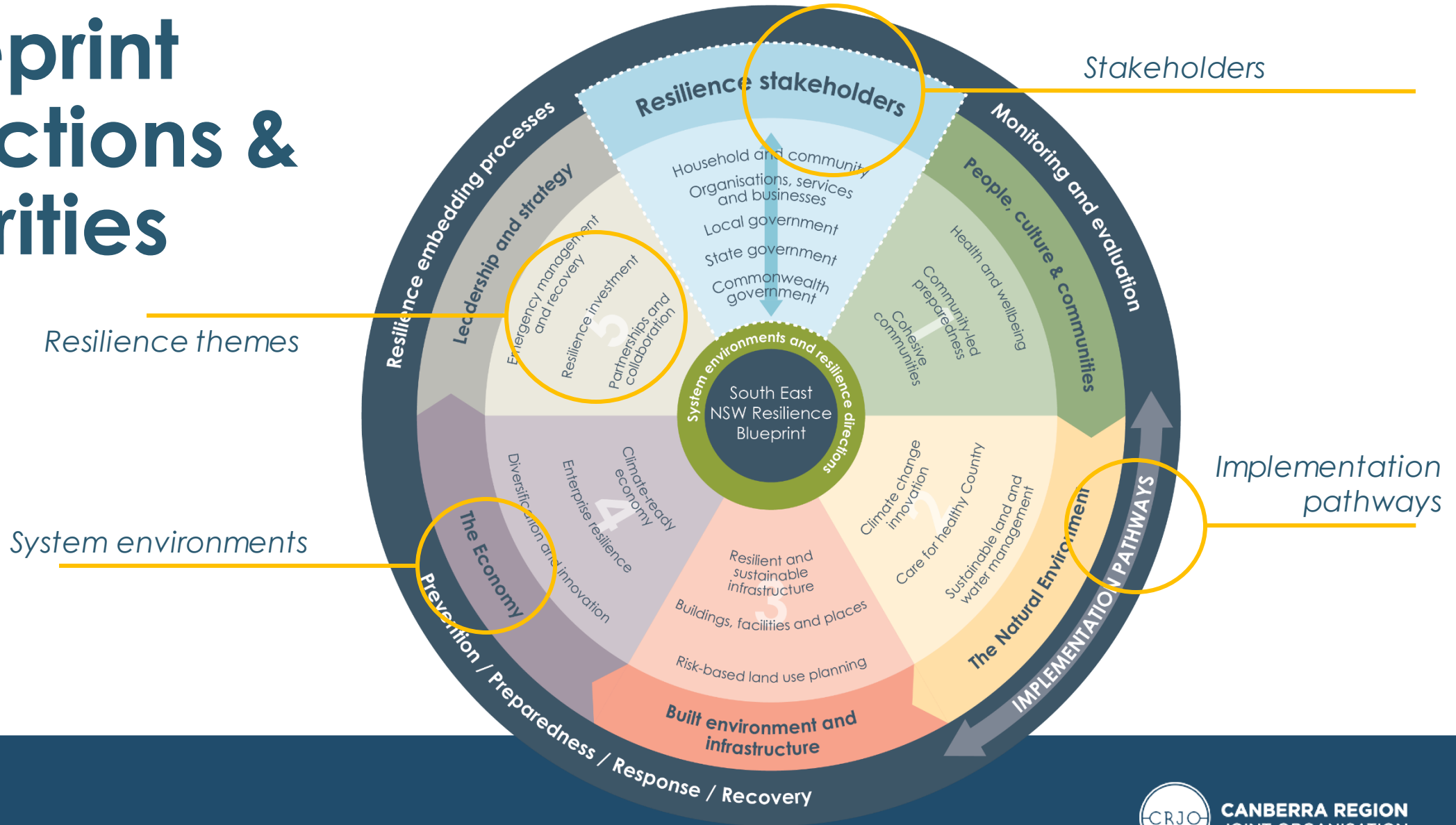
4.



LGA Snapshots

Local context
Local climate projections
Exposure
Vulnerability

Blueprint directions & priorities



What is our risk from disasters and climate change?

Figure 1a A new framework for complex climate risk assessment. This is an updated definition of climate risk which includes an additional fourth determinant: response. Source: Simpson et al., 2021



Hazard: Shocks (Bushfire, Flood) & Stressors (Drought, sea level rise) frequency

Exposure: of values or assets including people, cultural sites, infrastructure, environment, economy and community

Vulnerability: the sensitivity of the asset due to its condition or materials made from, the ability of an asset to absorb the impact,

Response: how we respond to protect the value or asset

Realised risk: people (lives), infrastructure (average annual loss), environment (threatened species and ecosystems), agriculture (productivity) to shocks and stressors

Resilience assessment

- Regional context
 - Landscapes, people and places
- Understanding risk
 - Shocks and stresses
 - Exposure, vulnerability and tolerability
- South East NSW risk profile
 - Resilience framework
 - Risks in a changing climate
 - Hazard and risk overview against climate projections

HAZARDS

A hazard is a natural process or occurrence, a source event which has the potential to result in harm or cause loss or damage depending on exposure. The United Nations Office for Disaster Risk Reduction (2020) provides a classification of hazard types to include:



Meteorological and hydrological - tropical cyclones, lows and troughs, drought, floods and heatwaves.



Extra-terrestrial - asteroid and meteorite impacts or solar flares.



Geohazards - earthquakes, volcanic eruptions, subsidence and landslides, tsunami, rockfalls and sinkholes.



Environmental - bushfires, land salination, reduced snow pack, biodiversity loss, contamination, storm surge and coastal erosion



Chemical - exposure of chemicals to humans, landscapes and ecosystems.



Biological - disease outbreak, epidemics and pandemics

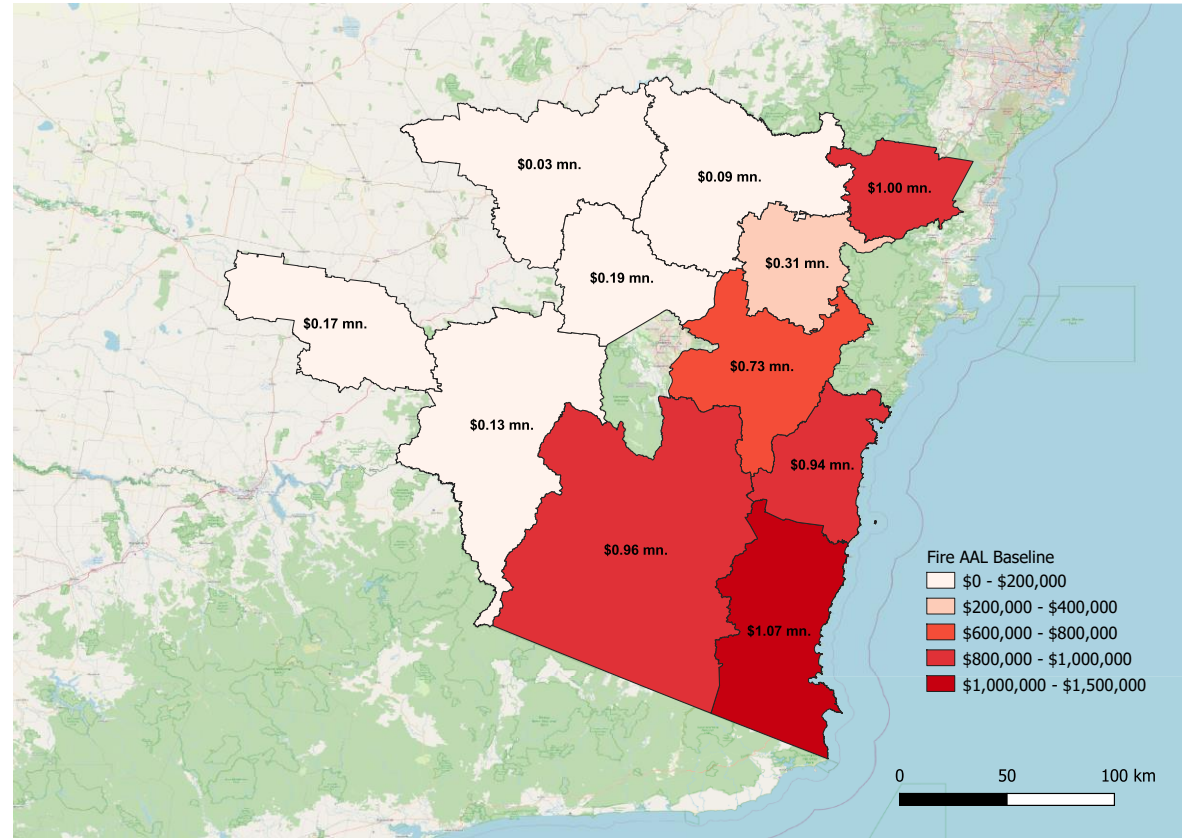
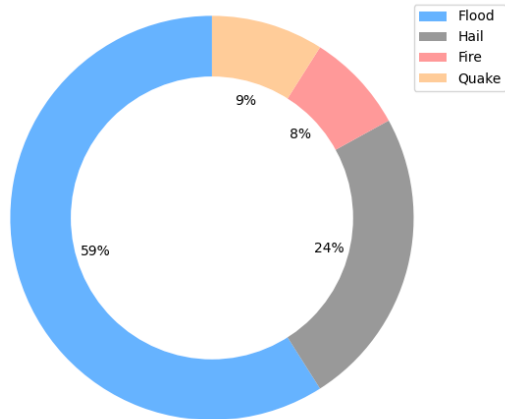
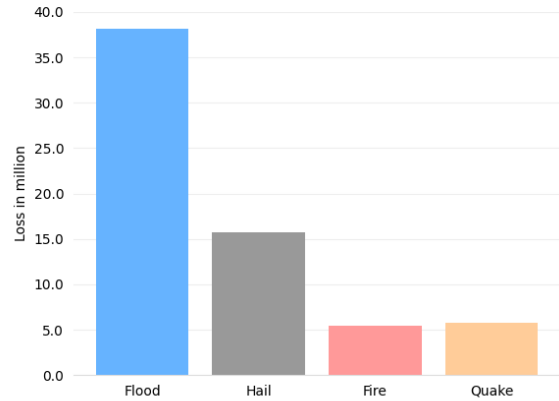


Technological - technology failure and complex systems which can be interrupted across local, national and international scales across a spectrum of interests including economics, security, infrastructure, transport and health. This includes cyber attacks.

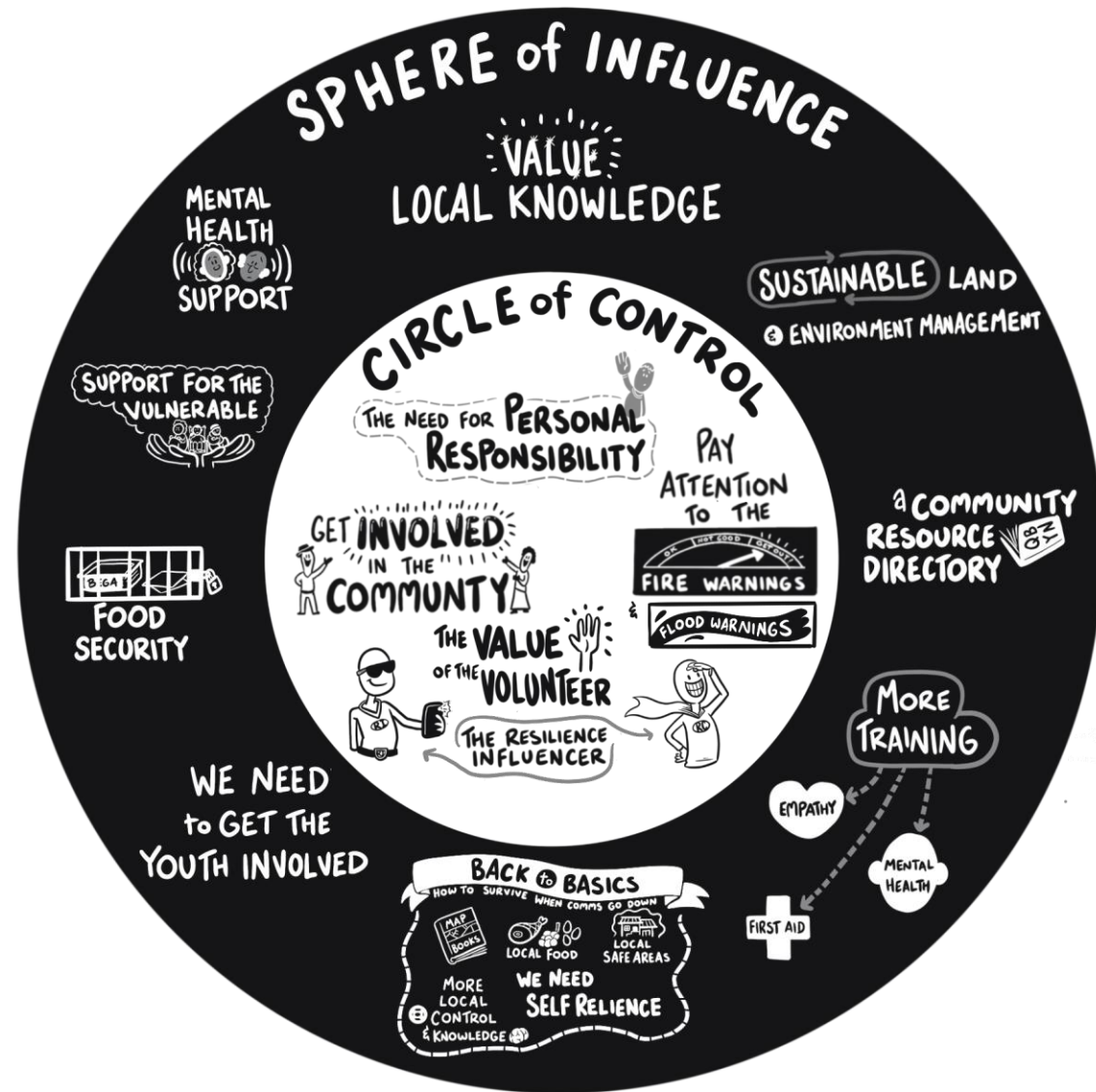


Societal - violence, conflict and civil unrest.

Bushfire risk to property



Embedding the Blueprint



**THIS PROCESS
IS BRINGING ME**

HOPE