

PROJECTED CHANGES:
NEW ENGLAND



Hot days are increasing



Cold nights are decreasing

NEAR FUTURE 2020-2039



Maximum Temperatures increase

↑ 0.4 – 1.0°C

Minimum Temperatures increase

↑ 0.5 – 1.0°C

FAR FUTURE 2060-2079



Maximum Temperatures increase

↑ 1.9 – 2.7°C

Minimum Temperatures increase

↑ 1.6 – 2.7°C



↑ Rainfall to increase in autumn

↓ Rainfall to decrease in winter



↑ Severe fire weather is projected to increase in spring & summer



↑ Average fire weather is projected to increase in summer, spring & winter



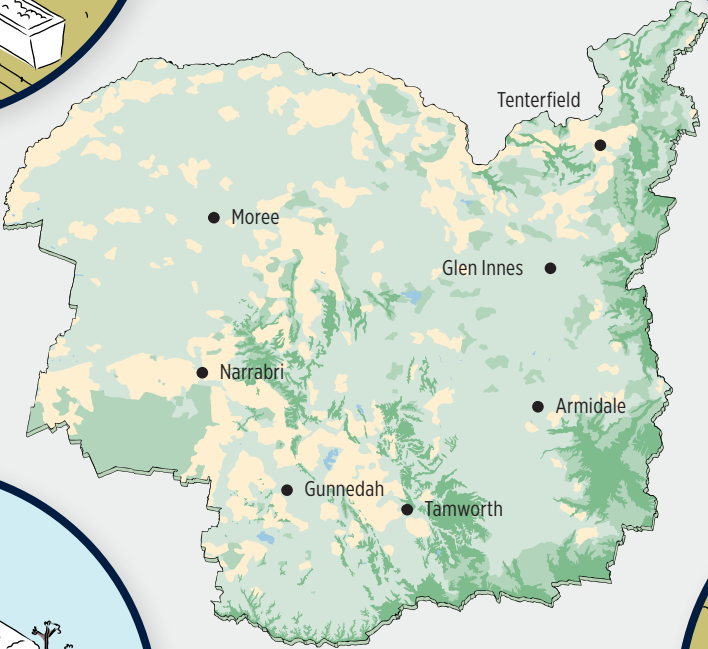
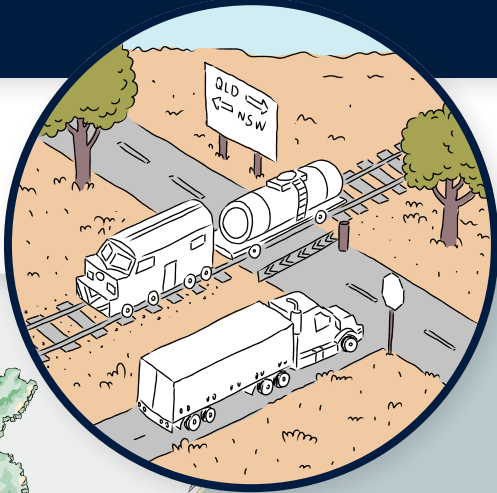
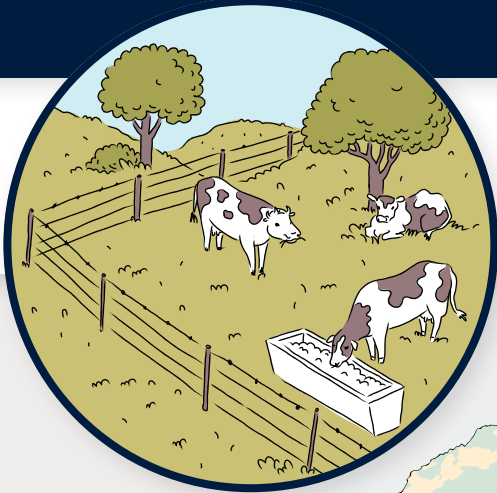
REGIONAL IMPACTS

AGRICULTURE

DROUGHT
Productivity, health & wellbeing

TRANSPORT NETWORKS

BUSHFIRE & FLOOD
Supply chain disruption



DROUGHT
Irrigation, productivity

BUSHFIRE
Ecosystems, tourism, health & wellbeing



COTTON PRODUCTION



NATIONAL PARKS