

PROJECTED CHANGES: NSW



Hot days are **increasing**



Cold nights are **decreasing**

NEAR FUTURE 2020-2039



Maximum temperatures increase

↑ 0.4 – 1.0°C

Minimum temperatures increase

↑ 0.0 – 0.5°C

FAR FUTURE 2060-2079



Maximum temperatures increase

↑ 1.8 – 2.6°C

Minimum temperatures increase

↑ 1.4 – 2.6°C



↑ Rainfall to **increase**
in **summer & autumn**

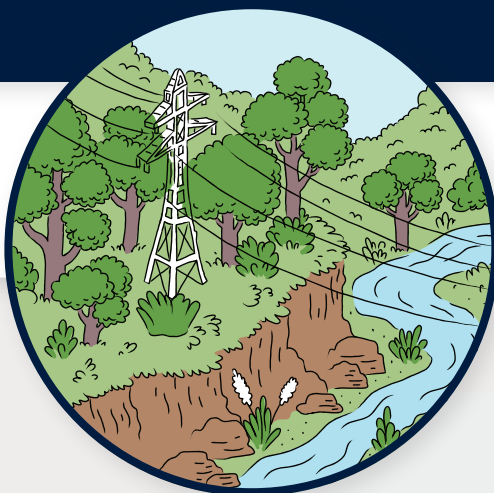
↓ Rainfall to **decrease**
in **spring & winter**



↑ Average & severe fire weather
is projected to **increase in**
summer & spring



REGIONAL IMPACTS



BUSHLAND

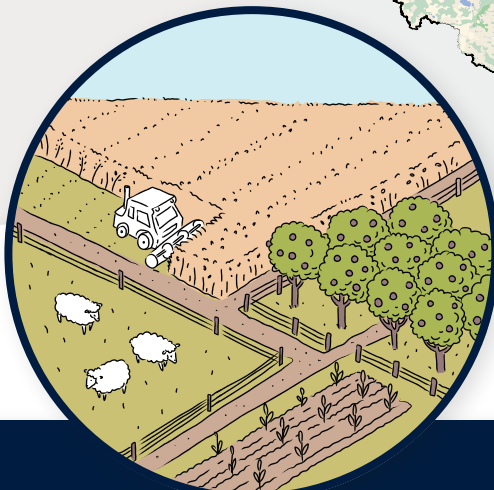
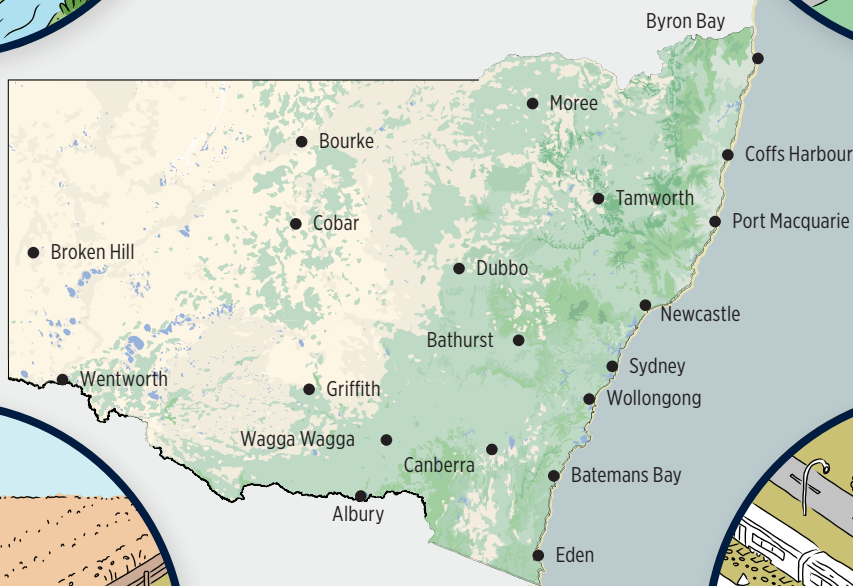
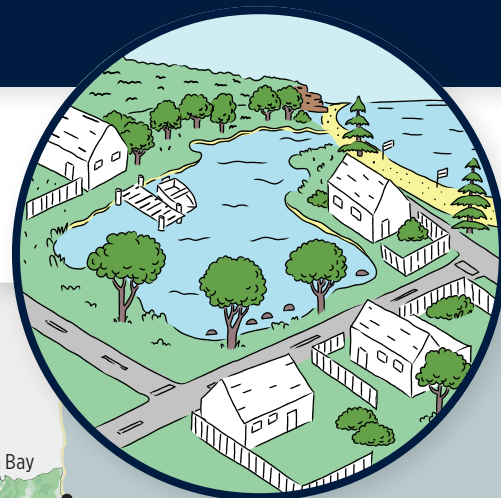
BUSHFIRE

Ecosystems,
infrastructure
health & wellbeing

COASTAL SETTLEMENTS

SEA LEVEL RISE, STORM

Erosion, coastal
inundation,
infrastructure



EXTREME HEAT, DROUGHT, FLOOD SEASONAL CHANGE

Productivity,
health & wellbeing

AGRICULTURE

STORM, FLOOD, BUSHFIRE

Infrastructure, supply
chain disruption

CRITICAL INFRASTRUCTURE

