

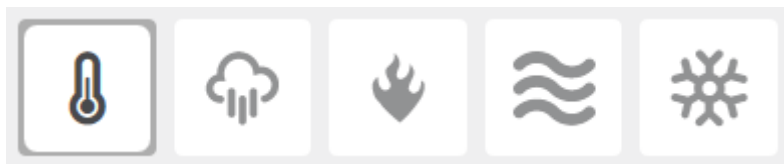
# NSW Climate Adaptation Newsletter

The latest in climate change adaptation research, news and events

Topics covered in this month's newsletter include:

- Regional climate projection workshops
- How to build a heat resilient community - Hunter regional workshops
- A new report on natural resources and extreme weather events
- Other news, grants, publications and events

[Share this newsletter with others](#) with an interest in climate adaptation



## Regional climate projections workshops

*OEH is running a series of free workshops across NSW where you can discuss the future climate of your region and tell us how you want to receive, use and share climate change information.*

Join staff from the Office of Environment and Heritage to look at the [NSW and ACT Regional Climate Model \(NARClIM\)](#) climate projections, as well as discuss how you can use this data within your own climate planning. If you can't make a workshop in person, attend the Sydney meetings as a webinar. Workshops will run for 90 minutes, please click on the link for your preferred location. Additional workshops in Newcastle, Wagga, Albury and Wollongong will occur in June.

- [Dubbo](#) Tuesday 12 May
- [Broken Hill](#) Wednesday 20 May
- [Tamworth](#) Thursday 21 May
- [Goulburn St, Sydney](#) Friday 22 May
- [Parramatta](#) Monday 25 May
- [Coffs Harbour](#) Thursday 28 May

Email [Heather Stevens](#) to receive details about additional times and locations

Liz Riley, a consultant to the Hunter Valley wine industry talks about the benefits of accurate regional climate information from the Adapt NSW portal and its potential to aid future planning.



## Hot and Getting Hotter!

### *Building a Heat Resilient Community*

The frequency and intensity of heatwaves in Australia is increasing, with the length, extent and severity of events in recent years not previously experienced. Climate models project this trend will continue, meaning even more frequent, hotter and longer lasting heatwaves into the future.

For the last decade councils in the Hunter Central and Lower North Coast region of NSW have been collaborating through the Hunter and Central Coast Regional Environmental Management Strategy (HCCREMS) to improve understanding and management of the impacts arising from a changing climate. This work has identified heatwave impacts as a regional priority.

In June 2015 HCCREMS will be convening four sub regional forums to raise awareness of the very real and significant impacts of heatwaves, and to identify priorities and practical actions for reducing these impacts.

- Taree: Monday 1 June 9.30am – 1.30pm
- Central Coast: Wednesday 3 June 9.30am – 1.30pm
- Muswellbrook: Thursday 4 June 9.30am – 1.30pm
- Newcastle: Wednesday 10 June 9.30am – 1.30pm

For more information about the Regional Heatwave Resilience project or forums please contact Steve Wilson

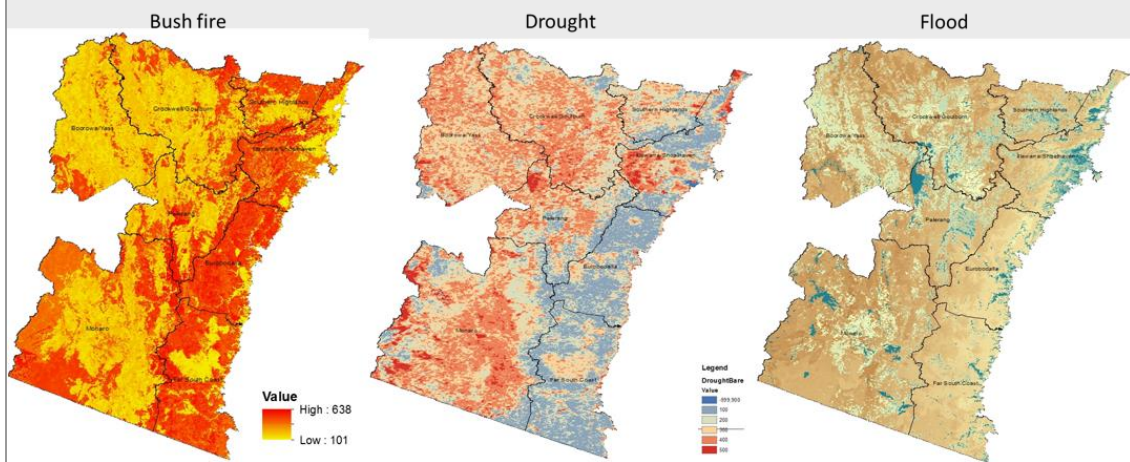
## How well are we protecting the natural resource base that supports us?

Extensive research examining this question with communities in South East NSW is available in a new report from the Institute for Sustainable Futures (ISF) Adaptive Communities Node.

For rural communities in the South East region of NSW, extreme climate events such as bushfires, floods, storms and droughts are an accepted part of life. Communities rely heavily on volunteer services provided by organisations such as the Rural Fire Service and State Emergency Service, to help protect lives and property during extreme climate events.

Working in collaboration with [South East Local Land Services](#), ISF ran a series of community workshops throughout the eight landscapes of the South East region. Participants at the workshops included farmers, local residents, emergency service volunteers, social service NGOs, council staff and local business operators. Hazard mapping was used to help participants determine the most important type of extreme event in their area and consider the actions taken by the community and service providers during the stages of the emergency management cycle: prevent, prepare, respond and recover.

A focus of the workshops was on what natural resources were at risk and how the loss of natural resources, such as healthy soils, clean water supplies and rare local biodiversity, would affect the community. While emphasis during the response phase to extreme events will need to remain on life and property, the workshops found that there is considerable scope in the *prevent* and *prepare* phases for enhancing the management of local ecosystems. [Access the full report here](#)



## Publications, events, news and grants

### Publications

[Applied Studies in Climate Adaptation](#). Edited by J Palutikof, S Boulter, J Barnett and D Rissik. This book highlights some of the emerging thoughts and conclusions around adaptation from The National Climate Change Adaptation Research Facility (NCCARF) phase one research projects.

### Conferences / events

[Climate Security – a local perspective](#). 27 May Price Theatre, Macquarie University 6:30-8:30pm. Hear from guest speakers including Andy Pitman and the Hon Rob Stokes, MP on discussing climate security at a local level. Free event, [RSVP here](#).

[24th NSW Coastal Conference, 2015](#) 10-13 November 2015, Forster, NSW. Hosted by Great Lakes Council. The theme of the conference is *Great Expectations - pathways for learning and delivery*

[Local Government NSW Annual Conference](#) 11 - 13 October 2015, Rosehill Gardens, Sydney. The annual policy making event for the 152 Councils of NSW.

### Grants

The highly successful [Building Resilience to Climate Change Grants](#) will open for Round Two applications mid 2015. Round two of the grants will be around the themes of:

- Building resilience to water supply and/or quality
- Adapting priority infrastructure

These grants provide between \$15,000 to \$80,000 for collaborative projects, delivered within 15 months.