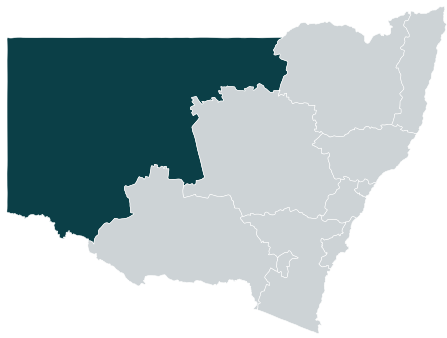




PROJECTED CHANGES



Increase in average temperature

2050

2090

+1.2°C +1.4°C



Increase in hot days per year

+19.6 +21.1



Decrease in annual rainfall

-15.3% -13.6%



Increase in severe fire weather days per year

+5.4 +6.0



Low-emissions scenario



Medium-emissions scenario



High-emissions scenario

2050

2090

+1.7°C +2.8°C

+24.9 +40.7

-10.6% -21.1%

+5.9 +11.9

2050

2090

+2.1°C +4.2°C

+30.4 +57.6

-20.0% -17.9%

+8.8 +15.6

REGIONAL IMPACTS



Murray-Darling river

Changes to rainfall



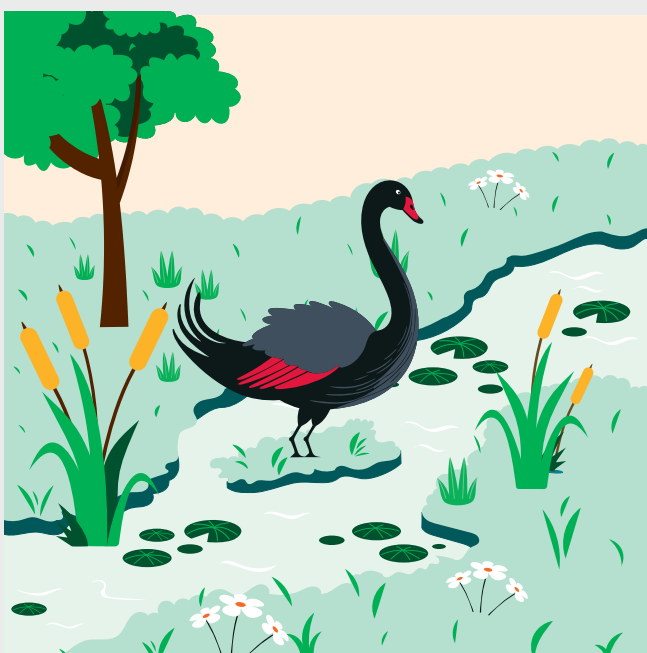
Changes to rainfall

Outback towns



Inland wetland

Changes to rainfall



Increased extreme heat

National Park



Data is based on NARClIM2.0 projections for SSP1-2.6 (low-emissions), SSP2-4.5 (medium-emissions) and SSP3-7.0 (high-emissions) and is presented relative to the baseline period of 1990-2009. Values presented are averages across the NARClIM2.0 model ensemble, and do not represent the full range of plausible climate futures. Climate change impacts are used to highlight how the region is likely to be affected by climate change, and impacts are not limited to the examples provided.