



Australian Capital Territory

PROJECTED CHANGES



Increase in average temperature

2050

2090

+1.1°C

+1.2°C



Increase in hot days per year

+2.6

+3.2



Decrease in cold nights per year

-19.1

-22.3



Decrease in average spring rainfall

-9.9%

-16.6%



Low-emissions scenario



Medium-emissions scenario



High-emissions scenario

2050

2090

+1.4°C

+2.5°C

2050

2090

+1.8°C

+3.7°C

+3.6

+8.0

+5.3

+12.8

-26.8

-46.6

-32.4

-67.7

-12.6%

-22.6%

-16.8%

-21.8%

REGIONAL IMPACTS



Canberra

Increased extreme heat

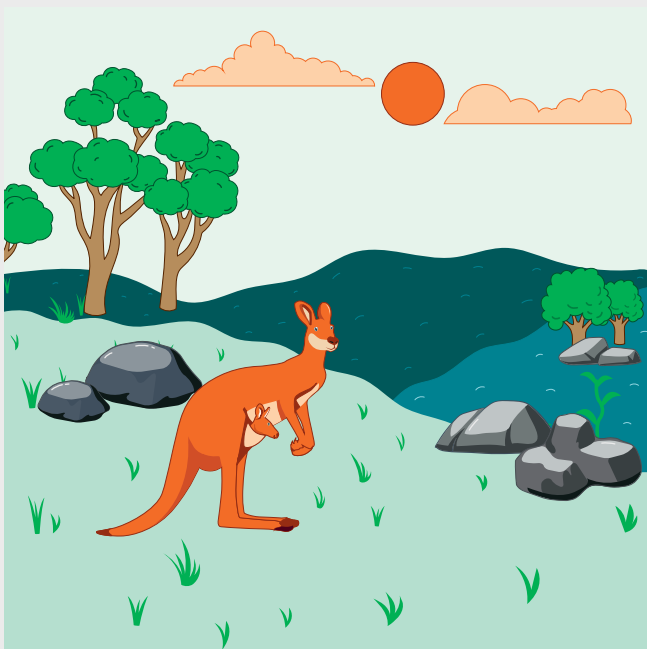


Increased severe fire weather

Urban fringe

Tourism

Increased extreme heat



Changes to rainfall

Water supply



Data is based on NARClIM2.0 projections for SSP1-2.6 (low-emissions), SSP2-4.5 (medium-emissions) and SSP3-7.0 (high-emissions) and is presented relative to the baseline period of 1990-2009. Values presented are averages across the NARClIM2.0 model ensemble, and do not represent the full range of plausible climate futures. Regional climate change impacts are used to highlight how the ACT is likely to be affected by climate change, and impacts are not limited to the examples provided.